



2019-2020 IMPACT REPORT



STRENGTHENING PUBLIC EDUCATION



# CONTENTS

- 03 Our Mission
- 04 About Us & Core Beliefs
- 05 Advocacy Priorities & Strategic Plan
- 06 COVID-19 Response
- 07 Awards & Accolades
- 08 School Supplies and Resources
- 10 Mentoring
- 12 School & Classroom Enrichment
- 13 Teacher Support and Recognition
- 14 Scholarships
- 15 College and Career Readiness
- 16 Literacy & Volunteers
- 17 Financials
- 18 Our Partners
- 20 Our Board



## OUR MISSION

Our mission is to strengthen public education in Hillsborough County through advocacy, investment of resources and programs that empower every student to achieve both academic and personal success.

# Strengthening Public Education in Hillsborough County Schools

This past year has been like none other in our mission to strengthen public education in Hillsborough County and ensure all students have the tools and resources they need to succeed in school and in life.

We entered the year with a new look, new brand and new website focused on our Strategic Plan priorities and sharing HEF's story and the impact of our programs with the community.

Then, the COVID-19 pandemic hit our area. It created extraordinary challenges for our diverse community and magnified deep inequities in our education system. HEF quickly adapted our work to continue to meet the needs of students in the crisis—understanding that the most vulnerable students in our community are at the highest risk of falling behind in their studies during such an unprecedented time in education.

In the midst of financial uncertainty, we are incredibly proud of how our partners rallied to provide ongoing support for students and their families facing economic hardships. **With the community's generosity, we raised nearly \$7.1 million last year to support our programs and the students and teachers in our district's highest needs schools.**

Moving forward, HEF is laser focused on creating equity in education, with a growing concern for literacy rates.

During this pandemic and beyond, HEF is living our core beliefs. We believe a community engaged in making educational excellence a priority will transform Hillsborough County—and are proud to help foster that impactful change.

## ⇒ Our Impact ⇒

Hillsborough Education Foundation is diverse in programs and initiatives to meet the needs of the 225,000+ students and 24,000+ employees in Hillsborough County Public Schools, the 7th largest district in the country.

Our **Core Beliefs** guide us in all that we do so that all students may reach their highest potential:

### Every Student Matters

Every student has the potential for success.

### Equity of Opportunity

Every student should have access to and equity of opportunity to benefit from a high-quality education.

### Effective Teachers are Foundational to Student Success

Empowering teachers with the resources and support they need to be effective in the classroom is critical for student achievement.

### Education is Key to a Prosperous Community

Education ensures a strong thriving community. Preparing students to enter postsecondary and career pathways is critical for a strong workforce and sustainable prosperity.

### Success Relies on Relationships

Our success relies on strong relationships. We are committed to being a strategic partner with Hillsborough County Public Schools and other partners with common goals to multiply our contributions and maximize impact on student success.

### Continuous Improvement

Relentlessly pursue continuous improvement and excellence in program delivery, processes and services using data and informed practices.

# Strengthening Public Education through Advocacy

Hillsborough Education Foundation believes it's important to use our voice to advocate for increased funding at the state level to strengthen public education in Hillsborough County. **Florida repeatedly ranks among the lowest in the nation when it comes to how much states are devoting to education.** Across spending indicators, Florida ranks 45th in the country according to Education Week's Quality Counts 2020 report. This year, HEF's Advocacy Committee established these priorities in our effort to support improved student outcomes:

## INVEST IN PUBLIC EDUCATION

Increase funding to provide equitable educational opportunities within safe and secure learning environments and meet rising operational costs.

## INVEST IN OUR TEACHERS

Prioritize teacher compensation and fund innovative ways to attract and retain quality teachers for at-risk students.

## STUDENT SUCCESS

## INVEST IN EARLY LEARNING

Increase access to early childhood learning and fund high-quality instructional programs.

## INVEST IN MENTORING PROGRAMS

Increase funding to expand quality youth mentoring programs for at-risk students.

## Our Strategic Plan: 2020-2022

As we look back at our achievements this past year, we are also looking ahead to the future and setting a course for continued success for our organization. In 2020, we launched our three-year strategic plan, which focuses on **five key areas**:

**Brand Awareness:** Our goal is to be recognized as "private support enhancing public education."

**Resource Development:** Our goal is to increase and diversify revenue streams for programs and initiatives sustainability and growth.

**Operational Excellence:** Our goal is to improve internal operations and processes that create and maintain reliable data, empower employees and optimize service delivery that results in consistent improvement of key performance indicators.

**Programs and Initiatives:** Our goal is to provide high-quality programs and initiatives that positively impact student success.

**Advocacy:** Our goal is to increase awareness and support of public education.

# Strengthening Public Education during the COVID-19 Crisis



## Providing Essential School Supplies

The COVID-19 pandemic created challenging times for families and businesses, changed how our students learned, how teachers provided lessons and how HEF continued to carry out our mission. In March, within days of school closures, HEF devised a plan to get core school supplies into the hands of students who needed them most. We adapted our programs and delivered \$193,000 in supplies to more than 90 of our highest needs schools to support 20,000+ students as they transitioned to eLearning for the rest of the school year.

## Bridging the Digital Divide

During the pandemic, digital inequities surfaced with our highest needs students who lacked vital internet access to successfully connect with their teachers and eLearning platforms from home. HEF created a Digital Equity Team to proactively find solutions to the digital divide and ensure students had adequate access. With support from our generous community partners and in collaboration with the school district, HEF distributed free Wi-Fi hotspots and tablets to help more than 800 families—providing the opportunity for students to access their online learning. Our work continued into the summer to keep students connected during extended learning and to prevent learning loss over the break. Our laser focus on digital equity continues in the 2020-2021 school year.



## Lending a Helping Hand

Hillsborough Education Foundation was able to provide Hillsborough County Public Schools families with 600+ meal kits for emergency food assistance, thanks to a generous donation from Feeding Children Everywhere and Chick-fil-A Tampa Bay.



We donated 8,200+ transparency sheets from our Teaching Tools Resource Center to Tampa Hackerspace to create reusable face shields that can cover surgical or N95 masks and extend the life of these limited medical supplies during the COVID-19 pandemic by adding a layer of protection.



Tampa Bay Lightning wing Alex Killorn presented Hillsborough Education Foundation with a \$50,000+ donation from his "Dock Talk with Killer" t-shirt sales, promoting his Instagram show. His generous contribution will support Hillsborough County Public Schools students in need.



# Strengthening Public Education through Our Work Awards & Accolades

We've continued to strengthen Hillsborough Education Foundation's brand while simultaneously strengthening public education in Hillsborough County. We are proud to receive recognition from state and local organizations and leaders for our work.



## COVID-19 Heroes of Tampa Bay Award

7,000 people across Tampa Bay voted, and out of 58 nominees, Hillsborough Education Foundation was one of 19 recipients honored with a **COVID-19 Heroes of Tampa Bay Award** presented by Mayor Jane Castor! We are incredibly proud of this recognition for our team's work during the pandemic to support Hillsborough County Public Schools teachers and students in need by providing essential supplies, virtual mentoring, helping to bridge the digital divide and so much more.

## Rated Exemplary by Foundations for Excellence

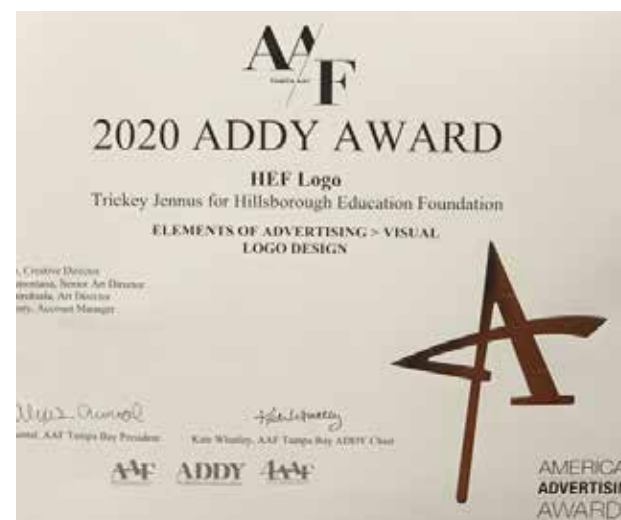
We are proud to receive the highest distinction of **exemplary** by the Consortium of Florida Education Foundations.



Foundations for Excellence sets quality performance standards in six key areas for local education foundations in Florida including Mission and Strategy; Program Quality; Board and Leadership; Fundraising and Sustainability; Partnership, Public Awareness and Engagement; and Effective Business and Organizational Operation. The rating is a reflection of our practices, policies and systems that we have in place to ensure the long-term success and sustainability of HEF!

## Silver ADDY Award - Visual Logo Design

We love our new logo, and so does the American Advertising Federation of Tampa Bay! After launching our brand redesign, we were thrilled to learn our new logo, designed by Trickey Jennus, won a Silver ADDY Award for **Elements of Advertising - Visual Logo Design**.



# Strengthening Public Education with School Supplies



More than 150,000 students in Hillsborough County Public Schools qualify for free or reduced-price lunch. Many students don't have some of the most basic supplies—paper, pencils or a backpack—that they need to be ready to learn. Our Teaching Tools Resource Center helps erase the need by providing free school supplies and classroom resources to students and teachers in our highest-needs schools. This support helps ensure all students have access to the tools they need to achieve both academic and personal success and alleviates the strain on teachers to purchase supplies out of their own budgets.



I don't have to worry about the pencil a student needs. I can give them one and it really builds trust. It makes them feel special and it makes them feel like the classroom is a safe place they can learn.



**Leah Burger**

Cleveland Elementary 4th Grade Teacher,  
Teaching Tools Resource Center Shopper

## Increased Need for Online Ordering

The schools we serve are spread out across 1,200 square miles of the county. In the first half of the school year, the demand for ordering supplies online continued to grow—orders were up 81 percent from last year! That was before the pandemic drastically changed the way we operate. In the spring, our highest needs schools received special deliveries of school supplies. For the 2020-2021 school year, all orders from the 191 eligible schools are placed online for pickup or delivery to 22 outlying schools.

**97%**  
of teachers say supplies from the Teaching Tools Resource Center give them the ability to create a more equal learning environment.

**HEF has new wheels!** We purchased a Box Truck in June 2020 to allow us to make school deliveries and donation pick-ups more efficiently. It also reduces our costs and eliminates the need to rent a truck.



**\$2.7M**

SCHOOL SUPPLIES  
DISTRIBUTED

**108K +**

STUDENTS SERVED

**5,245**

STORE VOLUNTEER  
HOURS LOGGED



## The Impact of our Teaching Tools Resource Center

March 14, 2020 was the last day teachers could access our store in person. When schools closed due to the pandemic, so did our Teaching Tools Resource Center and we suspended online ordering for the entire fourth quarter. Since the transition to eLearning happened during Spring Break, many students didn't have the vital supplies they needed for learning from home. We cleared the shelves and distributed the bulk of our supplies to schools to meet the needs of our most vulnerable students. Despite these changes and challenges, we are proud of our impact.



# Strengthening Public Education with Mentoring

Hillsborough Education Foundation's Take Stock in Children program is one of the largest mentoring programs in Tampa Bay. Our program provides low-income students with a caring adult volunteer mentor devoted to supporting a student's academic and future success, as well as continuous involvement from skilled College Success Coaches who engage in educational and career counseling and the commitment of a Florida Prepaid college scholarship upon successful completion of the program. Additionally, workshops on topics such as soft skill development, college and career readiness and financial aid are provided.

## Adapting our Mentoring Program to COVID-19

As COVID-19 closed schools in the spring, our entire mentoring operation had to transition to virtual mentoring for our **359 mentees**. Our team worked to connect with students in online one-on-one mentoring and success coaching sessions and offered topic-based group mentoring, including a COVID-19 Q&A, resume writing tutorial and more.



It means a lot to me to be a part of the TSIC program and to have a scholarship and a great mentor. Everything the program has done for me has made me very prepared, and I feel like I'm on the road to success. Having a mentor is fun and makes me feel more confident in my ability to get into college. After high school I plan to go to college and study Cardiology.



**Kyah**

Student | Take Stock In Children



I believe I can make a difference in a young person's life. I try foster a good communication with my mentee and instill that going to college will open doors for her—having that education is very important in order to be successful in life. Plus, the scholarship is a great way to start that journey. I enjoy mentoring very much.



**Norma Thomas**

Kyah's Mentor | Take Stock In Children

## Our Mentoring Program Earned a Perfect Score

Each year, the Take Stock in Children state office evaluates the performance of our mentoring program using a tool called the Balanced Scorecard (BSC).

**We are scored on several different metrics including the:**

- Percentage of students with 15+ mentoring sessions
- Quality of support given to students by their College Success Coaches.
- Number of and opportunity for relevant workshops and fulfillment of the state grant requirements.

**This year, for the first time in the history of our program, we have received a rating of Gold (the highest rating) and earned a perfect score of 100!**

We are so incredibly proud of our team, and we can't thank our dedicated mentors enough for helping to make this achievement possible—especially in light of the challenges faced at the end of the year. We exceeded our goals and continued to support students despite all the obstacles.



**5,336 +**  
MENTORING SESSIONS  
LOGGED



**100%**  
OF OUR CLASS OF 2020  
SENIORS GRADUATED  
HIGH SCHOOL WITH A  
STANDARD DIPLOMA

Compared to the most recent available numbers from the Florida Department of Education (2018-2019)  
Hillsborough County: 86.2%  
Florida: 86.9%



## Connecting Virtually During the Pandemic

**1,691**

Virtual Mentoring Sessions



**18**

Virtual Group Webinars



**70**

Seniors celebrated during  
Virtual Sendoff



# Strengthening Public Education with School & Classroom Enrichment

Every day, teachers and administrators go beyond the curriculum looking for ways to enhance the learning environment for their students. School and Classroom Enrichment activities support their innovative ideas and projects to better engage students in their learning. Providing teachers with funding for creative and exciting educational opportunities promotes better academic results for students.

To facilitate this program, we use an online grant application platform, so projects can be supported through collective efforts by a pool of individual investors and Hillsborough Education Foundation. **During the 2019-2020 school year, we awarded 128 School and Classroom Enrichment grants, ranging from \$100-2,000 per program or project.**



**Through grant funded projects, teachers reported student improvement in:**

- Subject matter knowledge
- Critical thinking
- Problem-solving skills
- Reading comprehension
- Social skills
- Grades

In addition, as part of our focus on equity, we provide financial assistance to our highest needs schools that lack funding to increase parent engagement, as well as incentives for students to improve attendance, behavior and course performance.



You could see the excitement on the students' faces when I showed them the large stack of our brand new big books! For many of the books the kids were shouting out, "I love that book!" Every day the kids enjoyed picking a big book and reading it to their friends. The books have started to become slightly worn in, which is a sign of how much my students love these books.



**Emily Alexander**  
Dunbar Elementary Magnet Teacher

Teachers say 90% of projects increased teacher effectiveness resulting in more inspired and motivated students, which positively impacted and improved students' academic performance.

## The Impact of Enrichment Activities

Scholastic Art & Writing Awards:  
706 Students

Hillsborough Regional STEM Fair:  
7,278 Students

Grants: 30,393 Students

# Strengthening Public Education with Teacher Support & Recognition

**2019-2020 School Year**

**\$58,032**

## Professional Development

HEF also provides financial assistance and scholarships for ongoing education and professional development, as well as for teachers seeking National Board Certification.



Congratulations to our 2020 winners (L-R): Keyada George – Ida S. Baker Diversity Educator of the Year, Miranda Harwood – Teacher of the Year, Angela White – Instructional Support Employee of the Year

Every day, more than 24,000 teachers and staff in our district make a difference in students' lives. They play a critical role in providing a welcoming academic environment where every student can thrive and reach their fullest potential—and certainly rose to the challenges of the pandemic and eLearning. These outstanding employees deserve to be recognized and supported.

Each year, we host HEF's Excellence in Education Awards with more than 1,800 attendees. This premiere event celebrates educators and school personnel who consistently utilize their talents to ensure students receive the best education possible. It's an opportunity for our community to show our appreciation and honor the best of the best in our district. At this year's ceremony, 705 nominees, thirteen finalists and ultimately three winners were recognized in three categories.



## Teacher Appreciation Week

We realize our teachers are foundational to our students' success. To show our support and gratitude during Teacher Appreciation Week, we held daily giveaways with a grand prize of a \$500 Classroom Enrichment grant.

Teachers shared pictures with us how they were adapting to working from home.



# Strengthening Public Education with Scholarships

Hillsborough Education Foundation works to ensure that all students have equitable opportunities to benefit from high-quality public education—to graduate prepared for postsecondary, career and life success.

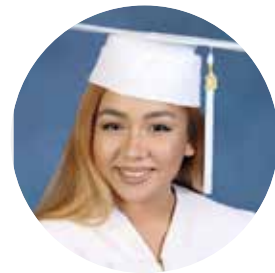
**Every year, HEF provides more than \$400K in scholarships to Hillsborough County high school seniors, ranging from \$500 to \$15,000.**



We are able to support students' dreams of pursuing higher education through the generosity of our business partners, community organizations and individual donors. For many students affording the opportunity can be a financial strain on families. These scholarships can help ease that stress and positively impact students' lives and the future of our community.

**In the 2019-20 school year, HEF awarded \$420,092 in scholarships to 220 Hillsborough County seniors.**

Additionally, our mentoring program provides at least a 2-year Florida Prepaid scholarship to mentees who successfully complete program requirements. **Between the two types of scholarships, HEF provides \$1 million worth of scholarships annually.**



“

This scholarship has helped reduce the financial burdens of college allowing me to focus on my grades and extracurriculars to build a strong application for medical school. There is an incredible sense of gratitude and comfort I feel knowing that there are people who believe in me, and my education. Thank you for your help in making my dreams come true.

”

**CHRISTINA HONG**  
Scholarship Recipient, USF Student,  
Majoring in Cell and Molecular Biology

# Strengthening Public Education with College & Career Readiness

Education is the number one factor that will determine our next generation of workforce and leaders. Students who graduate are more likely to enroll in postsecondary education, which results in a larger talent pipeline and sustainable prosperity for the future of Tampa Bay.

HEF provides webinars and workshops on various topics around skill building, college preparation and career exploration, in addition to tutoring for our mentees and paid student internships. While some activities have been postponed due to the pandemic, transitioning to virtual workshops allowed us to expand our program and provide more online learning opportunities for students.

## 2019-2020 School Year

# 516 students

516 high school and technical college students participated in 46 workshops



Our workshops effectively prepare students for their future:

**90+% of students surveyed reported increased confidence in choosing their postsecondary pathway, and increased confidence in understanding and exploring funding options.**



# Strengthening Public Education with Literacy & Our Volunteers

## LITERACY

Literacy is the foundation for student success in school and in life. HEF is committed to addressing the low literacy rates in Hillsborough County and fostering a love of reading for students. Unfortunately, not all students have books at their fingertips, especially during the COVID-19 pandemic and learning from home.

### Storytime Online

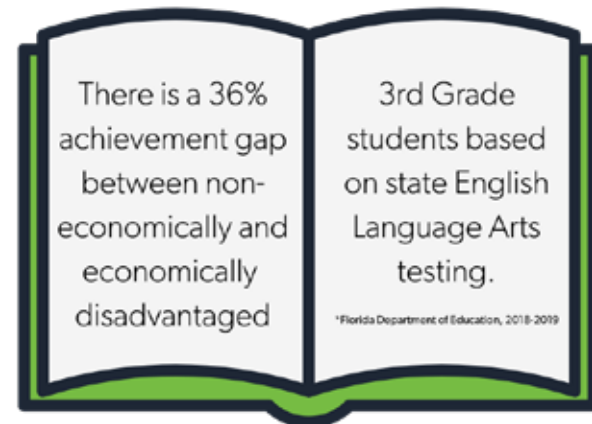
In the spring semester, HEF partnered with the **Tampa Bay Chamber, Hillsborough County Public Schools and Scholastic to expand the Storytime Online initiative**, originally launched by Hillsborough County School Board Member Dr. Stacy Hahn.

60 business and community leaders signed up to read a book aloud to students—virtually! Reading aloud to children helps with vocabulary, writing skills, attention span and memory.

### HEF Neighborhood Libraries

During COVID-19 restrictions, school media centers and public libraries had to close their doors. To help ensure our most vulnerable students had access to books, we launched the HEF Neighborhood Libraries literacy initiative.

Forty book-sharing boxes will be installed around the community at or near our highest needs schools and filled with books. The libraries serve as a place where neighbors are encouraged to leave or take a book for students of all ages on a variety of subjects.



## VOLUNTEERS

HEF would not be able to provide the same level of support to students and teachers without the dedication and helping hands of our valued volunteers. From our mentors to community members who volunteer to restock shelves, package supplies or review scholarships—they spend thousands of hours working on projects from home and on-site giving back to our community and helping strengthen public education.



During the pandemic, volunteers like Brian Butler and his son Chris, stepped up to deliver essential school supplies to our highest needs schools.

We're grateful for our more than **1,200** volunteers:

Teaching Tools  
Resource Center

⇒ 725

Mentors

⇒ 292

Scholarship  
Reviewers

⇒ 237

## FINANCIALS

### Financial Summary

Fiscal Year Ending June 30, 2020 per audited statements	2020	2019	
<b>PUBLIC SUPPORT AND REVENUE</b>			
Contributions	27%	\$1,891,087	\$1,807,314
Fundraising Event, net	4%	\$294,122	\$316,862
Donated Goods & Services	43%	\$3,038,858	\$3,850,323
Government Grants & Other Grants	25%	\$1,815,182	\$1,224,150
Investment Income	1%	\$41,211	\$128,617
<b>TOTAL PUBLIC SUPPORT &amp; REVENUE</b>		<b>\$7,080,460</b>	<b>\$7,327,266</b>
<b>PROGRAM SERVICES AND EXPENSES</b>			
Program Services	92%	\$6,397,183	\$5,908,152
Management and General	4%	\$263,065	\$271,398
Development/Fundraising	4%	\$288,785	\$298,179
<b>TOTAL PROGRAM SERVICES &amp; EXPENSES</b>		<b>\$6,949,033</b>	<b>\$7,264,803</b>



- College & Career Readiness **4%**
- Teacher Support and Recognition **7%**
- School & Classroom Enrichment Programs **12%**
- Mentoring & Scholarships **25%**
- Teaching Tools Resource Center **44%**
- Management and Fundraising **8%**



We have proudly earned the highest 4 Star Charity rating from Charity Navigator, due in part to our dedication to be responsible stewards of donors' contributions.



HEF has received GuideStar's Gold Seal of Transparency by sharing our organization's strategies, plans for achieving our goals and progress with key stakeholders.

### THANK YOU IN-KIND PARTNERS!

Thank you to 290 individual and corporate partners who donated more than \$1.1 million worth of in-kind gifts in 2019-2020.

Special thanks to the Kids in Need Foundation for connecting us with corporate partners across the United States that provide us with school supplies for students in need.

Because of our generous partners, we were able to help more than 108,000+ students in Hillsborough County in 2019-2020.

For every dollar you invest in HEF, **92 cents** is used directly for our programs supporting students and teachers.

# OUR PARTNERS

## \$100,000+

Citi Foundation  
Community Foundation of Tampa Bay, Inc.  
Consortium of Florida Education Foundations  
Mary and Bob Sierra Family Foundation, Inc.  
The Mosaic Company  
Suncoast Credit Union  
Take Stock in Children

## \$75,000+

Caspers Company McDonald's Restaurants\*  
PwC Charitable Foundation  
Spurlino Foundation

## \$50,000+

Amgen Foundation  
Citi\*  
Code.org  
Generate Capital, Inc.  
Hillsborough County Public Schools - Employees  
Moffitt Cancer Center  
Tampa Bay Rays\*

## \$25,000+

Amscot Financial\*  
Aon  
Bristol-Myers Squibb Company  
Helios Education Foundation  
Hillsborough County Sheriff's Office\*  
Humana, Inc.  
Sagcor Life Insurance Company\*  
Verizon  
William A. Gregory, Jr. Foundation, Inc.

## \$10,000+

Ajax Building Corporation  
Allstate Construction, Inc.  
Anston-Greenlees, Inc.  
Batson-Cook Construction\*  
Bloomin' Brands, Inc.  
Buccaneers Limited Partnership  
Blake and Tate Casper  
CPPI\*  
Creative Contractors, Inc.  
Crowe Foundation  
EWI Construction, LLC  
Fleischman Garcia Architecture  
Florida Blue  
George Edgecomb Bar Association

Hancock Whitney  
Hillsborough County Classroom Teachers Association, Inc.\*  
Institutional Processing Services, LLC  
The Lightning Foundation, Inc. & Vinik Family Foundation  
Mabel and Ellsworth Simmons Charitable Foundation, Inc.  
Scott Myers  
Publix Super Markets Charities  
Reno Building, LLC  
Suncoast Credit Union Foundation  
Tampa Kiwanis Foundation, Inc.  
TECO Energy, Inc.  
Tierra, Inc.\*

Tribeca ColorSalon  
United Skates of America, Inc.  
Wells Fargo Foundation  
Williams Company Tampa

## \$5,000+

David Amis  
The Beck Group  
The Billy Turney Foundation, Inc.  
Kimberly Brannan  
Centegix  
Coca-Cola Beverages Florida\*  
Cognizant  
DC Studio Architecture and Planning  
Mr. James L. Ferman, Jr.  
Geico  
Gerda Corp.  
Gilbane Building Company  
The Grainger Foundation  
Harvard Jolly, Inc.  
Hepner Architects, Inc.  
Hillsborough County Sheriff's Office Charities, Inc.  
JE Dunn Construction Company  
John Lynch Foundation  
Kelly Educational Staffing  
LV Thompson Family Foundation  
LEGOLAND Florida  
Long & Associates Architects/Engineers, Inc.  
Bob and Mary Martinez  
Minimise USA, LLC  
Mitchell Elementary PTA  
Nielsen Foundation  
Outback Bowl Tampa Bay  
Phoenix Engineering Group  
Publix Super Markets, Inc.\*  
Ringling College of Art and Design

Roosevelt Elementary School PTA  
Mary Sue and Fred Rothenberg  
Tampa Bay Mariners Club, Inc.  
Tampa Film Institute  
Tampa Hillsborough Film & Digital Media Commission, Inc.  
Christopher and Cindy Taylor  
Tidewater Fleet Supply  
Unlimited Site Services  
USAA Foundation  
VALIC Financial Advisors  
Wilder Architecture, Inc.

## \$2,500+

A.D. Morgan Corporation  
Advanced Drying System  
Angelo's Aggregate Materials, LTD  
Ashberry Commercial Water  
Baker Barrios Architects, Inc.\*  
The Bank of Tampa  
William Bissett, Jr.  
Capform, Inc.  
Centennial Bank  
Cox Fire Protection, Inc.  
Davis Islands Garden Club, Inc.  
Envision Lighting System  
Ernst & Young, LLP  
First  
Franklin Middle School  
Gamma Theta Omega, Inc.  
Gordon Gillette  
Grow Financial Federal Credit Union\*  
Hill Ward Henderson\*  
Hillsborough Association of School Administrators, Inc.  
Horus Construction Services, Inc.  
G. Randall James\*  
Peter Lefferts  
Lindell Investments  
Mabry Elementary School PTA  
Majesty Title Services, LLC  
James and Barbara Major  
Manhattan Construction, Inc.\*  
Sharon Marino  
Drew and Jodi Marshall  
Metrohm USA, Inc.  
myON by Renaissance  
Sharon and Terry O'Connor  
Phi Beta Kappa Alumni Association of Tampa Bay  
PNC Foundation  
Port Tampa Bay  
Preferred Materials  
Raynor Company Group

Regions Bank  
REP Architects, Inc.  
Rowe Architects, Inc.  
Joyce Sawyer  
Spectra Contract Flooring  
Tampa Bay Times  
Tappouni Mechanical Services, Inc.  
Target Corp/Foundation  
thyssenkrupp Elevator Corporation  
T-Mobile  
The University of Tampa  
Upper Tampa Bay Education Foundation, Inc.  
VoltAir Consulting Engineers, LLC  
Walbridge Construction  
The Walmart Foundation  
Wharton Smith, Inc.  
Women in Defense Tampa Bay

## \$1,000+

AIM Engineering & Surveying, Inc.  
ASEE  
AT&T Florida  
Automated Building Control Systems, Inc.  
AXA Advisors, LLC  
Patsy Ballard  
Bard Manufacturing  
Barnes & Noble Booksellers, Inc.  
Andre Beaudry  
Louis E. and RoseAnne G. Bowers  
Carl Brannan  
Bunce  
Captrust Financial Advisors  
Carastro and Associates, Inc.\*  
Cardinal Point Management  
The CarMax Foundation  
Elizabeth and Samuel Castor  
Catalina Marketing Charitable Foundation  
Ciminelli Real Estate Services of Florida, LLC\*  
CKT Asset Management Company  
Communications International, Inc.  
Chad Chronister and Nicole DeBartolo  
Marvin and Cecile Essrig  
FloridaMakes  
Ford & Associates, Inc.  
Friends of U.S. Military Families, Inc.  
Laura Gagnon  
Gold & Diamond Source\*  
Grand Krewe de Libertalia, Inc.  
Mary Greco-Smith  
Howard Harris  
Hatricks  
Horace Mann Insurance  
Horne Construction  
Sue M. House\*  
Kevin and Susan Johnson  
Kim and Sean Jowell  
Mark and Anne Kaiser  
The Kilene Kelly Group, Inc.  
Kisinger Campo & Associates  
Laser Ops  
Paula Little  
Lockheed Martin Corporation  
Stephen and Virginia McGucken

Nova Southeastern University\*  
OHC Environmental Engineering, Inc.  
Richard and Mary Peck  
Tannia G. Peeples  
Michael and Hope Poland  
R L Burns Inc  
Rasmussen College\*  
Royce and Laurie Reed  
Alexander Rodriguez  
Roland Park K-8 School PTA  
Eli and Janet Rose  
Saint Leo University  
Ken Sale\*  
Stephen and Diana Sessums  
SGM Engineering  
Sean Shaw  
Sprint  
Starkey Family Foundation  
Kevin and Cindy Sutton  
Target Recovery Towing  
Yvette Tremonti  
Trickey Jennus  
Susan Valdes  
Valley National Bank  
Walmart #1501  
Westfield Brandon  
Westfield Shoppingtown Citrus Park  
Julie Williamson

## \$500+

Amalgamated Transit Union Local 883  
Ambersley Foundation  
Irene and Peter Baker  
Dr. Lelia Barks  
Samuel Brannan  
Maik Buckingham  
Busch Gardens Tampa Bay\*  
Carrollwood Cultural Center  
Center Place Fine Arts and Civic Association, Inc.  
Gwen Drapela  
Kelley and Edward Duncan  
F5 Networks  
Bruce Faulmann  
Sol and Sandra Fleischman  
Florida Forklift  
Foresight Construction Group  
Bernard and Laura Gaffney  
Luis and Mary Garcia  
Grassroots Baseball  
GSA Security, Inc.  
Elizabeth L. Hapner  
HCPS Business Services Team  
Rosemary H. Henderson  
Pam Iorio  
Dawn Jess  
Johnson & Johnson Global Services  
R. Duane Johnson  
Krewe of Agustina de Aragon  
Tate Kubler  
David Lair  
Lakeshore Learning Materials  
Lilly Pulitzer  
Stephen Lyons  
Chris McKissick  
Nabors, Giblin & Nickerson, P.A.

T. Corey and April Neil  
Patel Greene & Associates  
Psychological Assessment Resources, Inc.  
Thomas Ray  
Ray Williams Funeral Home  
Tom and Marsha Rydberg  
Service Works Commercial Roofing  
Ted and Roberta Stasney  
Stratagem Risk, LLC  
Tampa Bay Food Truck Rally  
Kim Thresher\*  
Untouchables MD  
Walden University\*  
Ward - Mitchell  
Sherneatha Youngblood  
Andrea Zelman and T. Clay Phillips

## \$250+

Paul Anton  
Mrs. Kathleen Belmonte CTFA, AEP  
Andrew and Mallory Brannan  
Constance and Joseph Camunas  
Maria Carvalho\*  
David DeMilner  
Isell Denson  
DG-C Stores  
Fantasy Theatre Factory, Inc.  
Ferman Motor Car Company, Inc.  
Alison Fiol  
Friends of Tampa Recreation, Inc.  
Linda Hague  
Anna Hanks and Paul Sicard  
Haystax  
Erin Hesbeens  
J&J African Ancestry Leadership Council  
Tami Kamp  
Key Engineering Associates  
Erin Lorenz  
Thomas McRae  
MDL Insurance Advisors, Inc.  
Mulrennan Middle School  
Michael Nash  
PBA Design Group, Inc.  
Powerhouse Gym  
James Roberts  
Samuel Rothenberg  
Les J. Ryals, Jr.  
Sebastian J. Castellano DDS  
Edward Shaw  
Sheeter Consulting  
Adelaide Sink  
Daniel Stern  
Amanda Taylor  
Melinda and Doug Taylor  
Times Publishing Company - Employees  
Holly and John Tomlin  
Jose and Lourdes Valiente  
Walmart Supercenter #941  
MaryLou Whaley  
Virginia Willcox  
Walter Woolf  
Aron Zions

\*Made in-kind donations in addition to monetary contributions

# BOARD OF DIRECTORS\*

## OFFICERS

**Royce Reed, Chair**  
PNC Wealth Management

**Drew Marshall, Vice Chair**  
CI Group

**Blake Casper, Secretary**  
Caspers Company

**Chris Taylor, Treasurer**  
LM Funding

**Kim Jowell, CEO**  
Hillsborough Education Foundation

**Kevin H. Sutton, Legal Counsel**  
Hill Ward Henderson

## DIRECTORS

**Betty Castor**  
Former Florida Commissioner of  
Education & Former USF President

**Dr. Joyce Haines**  
University of South Florida

**T. Corey Neil**  
The Bank of Tampa

**Tommy Chuck**  
iHeart Media Tampa Bay

**Sue House**  
Community Activist

**Dr. Bhavin Patidar**  
Bay Area Neurology

**Addison Davis**  
Hillsborough County Public Schools

**Sterling Ivey**  
Citi

**Michael C. Poland**  
Community Volunteer

**Rep. Fentrice D. Driskell**  
Florida House District 63

**G. Randall James**  
The James Law Group, P.L.

**Brian Richeson**  
Tampa Bay Rays

**Bruce Faulmann**  
Tampa Bay Times

**R. Duane Johnson**  
Community Activist

**Mary Sue Rothenberg**  
Community Activist

**Mark Fernandez**  
Stonehill Innovation

**Kevin Johnson**  
Suncoast Credit Union

**Sean Shaw**  
Merlin Law Group

**Sol J. Fleischman, Jr.**  
Fleischman Garcia Architecture

**Rob Kriete**  
Hillsborough Classroom Teachers Assoc.

**Ted Stasney**  
Marketing Research Services

**Nikki Foster**  
The Mosaic Company

**Tate Kubler**  
Ernst & Young, LLP

**Joel K. Stephens**  
Thomas Financial Group

**Gordon Gillette**  
Early Learning Coalition of Hillsborough  
County

**Fraser MacKechnie**  
Amscot Corporation

**Kimberly D. Thresher, Esq.**  
Meridian Partners Law

**Dr. Stacy Hahn**  
Hillsborough County School Board

**The Honorable Bob Martinez**  
Holland & Knight

**Yvette Tremonti**  
Moffitt Cancer Center

## EMERITUS

**Doretha Edgecomb**

**Tom R. Dorety**

**Luis Garcia**

*\*As of December 2020*