



Impact Report

2021-2022

A Note From Our Leaders



As we reflect on the success stories of the past year for students, teachers and our organization, we are deeply grateful for our community partners and donors. Because of your generosity, **Hillsborough Education Foundation raised a record-setting \$9.5 million to help strengthen public education through our programs.**

This report reveals the tremendous impact we can have when we work together to support the most vulnerable students and highest needs schools in our community, bridge inequities so every child can benefit from a high-quality public education and help close achievement gaps for students who do not have the same resources as some of their peers.

While we continue to help at-risk students overcome learning losses caused by disruptions to education during the pandemic, we are incredibly proud of the work that has led to a reduction in the number of "D" and "F" Transformation Network schools from 28 to 5 over the past three years. As a strategic partner with Hillsborough County Public Schools, we celebrate this success, as well as the district increasing its ranking to 19th in the state, up from 35th.

For the first time in our organization's 35-year history, we crossed a new threshold by distributing a record \$4.1 million in school supplies. We also laid the foundation for program growth and expansion opportunities in the coming years by securing multi-year funding for early learning and literacy, digital equity and college and career readiness initiatives.

As we look to the future, we know there is more to be done to help every student achieve academic and personal success. Our children today are counting on us to prepare them for tomorrow's workforce. Through our collective commitment to invest in education, we can help students in ways that will last a lifetime. As you read our report, we hope you share in the pride and impact of our work. Thank you for your continued support!

DREW MARSHALL
HEF Board Chair

KIM JOWELL
HEF CEO

Table of Contents

July 1, 2021-June 30, 2022

04	—	Strengthening Public Education
05	—	Advocating for Education
06	—	Keeping Students Connected and Learning
07	—	Transforming Early Literacy
08	—	Promoting College and Career Pathways
09	—	Supporting Post-Graduation Success
10	—	Supplying Essential Learning Tools
11	—	Connecting the Community to Our Classrooms
12	—	Celebrating Excellence in Education
13	—	Investing in Public Education
14	—	Our Partners
16	—	Our Board

Our students depend on Hillsborough County Public Schools.
Our schools depend on all of us.



Strengthening Public Education

IN HILLSBOROUGH COUNTY PUBLIC SCHOOLS

OUR MISSION

Our mission is to **strengthen public education** in Hillsborough County through advocacy, investment of resources and programs that empower every student to achieve academic and personal success.

OUR IMPACT

Hillsborough Education Foundation is diverse in our initiatives to meet the needs of the 220,000+ students and nearly 24,000 employees in Hillsborough County Public Schools, the 7th largest school district in the country.

OUR CORE BELIEFS

➤ EVERY STUDENT MATTERS

Every student has the potential for success.

➤ EQUITY OF OPPORTUNITY

Every student should have access and equity of opportunity to benefit from high-quality education.

➤ EFFECTIVE TEACHERS ARE FOUNDATIONAL TO STUDENT SUCCESS

Empowering teachers with the resources and support they need to be effective in the classroom is critical for student achievement.

➤ EDUCATION IS KEY TO A PROSPEROUS COMMUNITY

Education ensures a strong, thriving community. Preparing students to enter postsecondary and career pathways is critical for a strong workforce and sustainable prosperity.

➤ SUCCESS RELIES ON RELATIONSHIPS

Our success relies on strong relationships. We are committed to being a strategic partner with Hillsborough County Public Schools and other partners with common goals to multiply our contributions and maximize our impact on student success.

➤ CONTINUOUS IMPROVEMENT

Relentlessly pursue continuous improvement and excellence in program delivery, processes and services using data and informed practices.

Advocating for Education

Hillsborough Education Foundation uses our voice at the state and local level to advocate for our students, teachers and district to help strengthen public education in Hillsborough County.

HEF supports legislation and other actions that align with our **Advocacy Priorities**, which are centered around student success.

INVEST IN PUBLIC EDUCATION

Increase funding to provide equitable educational opportunities for all students within safe and secure learning environments and meet rising operational costs

STUDENT SUCCESS

INVEST IN OUR TEACHERS

Demonstrate the importance of our educators by increasing teacher compensation and funding innovative ways to prepare, attract and retain high-quality teachers

INVEST IN EARLY LEARNING

Increase access to early childhood learning and fund high-quality instructional programs

INVEST IN MENTORING PROGRAMS

Increase funding to expand quality youth mentoring programs for at-risk students

Florida continues to rank among the lowest in the nation for K-12 public education funding. We believe investing in students and teachers today is an investment in our future.

School District Education Foundation Matching Grant Program

In 2022, lawmakers committed \$6 million in recurring funding for the School District Education Foundation Matching Grant Program, which allows local education foundations like HEF to innovate learning and provide impactful support for our students and teachers in Hillsborough County Public Schools.

Through the collaborative efforts of its members, including HEF, the Consortium of Florida Education Foundations (CFEF) successfully advocated for the creation of legislative matching funds from the State of Florida in 2000. This fiscal year, we received \$419,529 that we matched dollar for dollar for our initiatives with the generosity of our community.



Investing in our Schools

HEF advocated for the passage of the half-cent sales tax in 2018. Since voters approved the 10-year referendum, the funding for infrastructure projects is improving learning conditions for students and working conditions for staff.

REFERENDUM RESULTS

Through August 2022

\$438 million
invested

481
projects completed

179
projects in progress

1,785
total projects projected

Making Public Education a Priority, 2022 Florida Legislative Session

Through our Board of Directors, Advocacy Committee and staff, HEF is committed to being changemakers for our children to ensure all students can benefit from a high-quality public education.

This legislative session, HEF shared our support for legislation that successfully increased the Base Student Allocation (flexible funding for the district) and expressed concerns over a measure, which was ultimately rejected, that would have diverted much-needed funding from our district.



We appreciate the support of lawmakers for continuing to invest in public education.



Keeping Students **Connected** and Learning

HEF's **Digital Equity Initiative**, launched to meet students' remote learning needs during the pandemic, has become a model for other education foundations across Florida.

Our program continues to remove educational barriers for low-income families by providing internet access, a device and one-on-one digital literacy coaching to ensure our highest-needs students can connect to the online resources they need to complete assignments from home and expand their learning opportunities.



"It's nice that someone cares about my kids' education and future as much as I do. We need all the help we can get."
- Francis Hernandez, Mother of 4

2021-2022 School Year

\$643K

in funding secured

920

students supported

161

schools served

717

home visits completed

"Josh now has the opportunity to continue his studies at home and to put into practice the things he's learned and the knowledge he's gained at school."

*-Stefannia Calderon
Mother*

Students are referred to our program by school staff who see a need and an opportunity to build equitable online access for all children.

"I cannot thank you enough. It changes the whole game for students to have access to a computer at home."

- Olivia Healy, Seminole Heights Elementary Teacher

Results from our program show **92% of parents** are involved with their child's development, education and/or school and are checking assignments and grades 2-3 times per week.

With donors' support, HEF has secured **\$1.3 million** and helped **2,680 students** since the start of the pandemic through this fiscal year. We are grateful to all our partners, including these significant Digital Equity Initiative funders:





Transforming Early Literacy

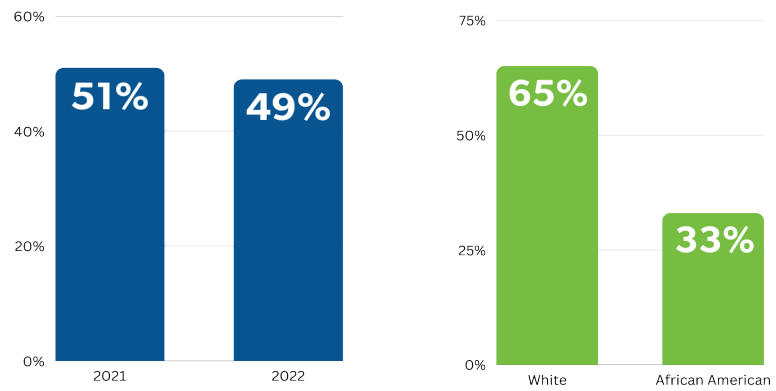
\$26,150

HEF funded 20 grants focused on literacy this school year.

Dropping third grade reading scores, achievement gap cause concern

Research shows third graders who are not reading at grade level are four times more likely to drop out of high school than proficient readers.

These numbers reinforce the need for early intervention. In 2022-2023, HEF is launching a new **Transforming Early Literacy Initiative** focused on creating a strong literacy foundation for students in Pre-K and Kindergarten.



Hillsborough County 3rd grade students reading with proficiency, 2021-2022 school year

Nearly two-thirds of white students are reading on grade level whereas only a third of African American students are reading with proficiency in third grade English Language Arts testing—a 32-point achievement gap.

HEF's Community Partners Put Books into the Hands of Students Who Need Them Most



Brian and Maureen Butler from **Vistra Communications** wanted to honor their parents and their struggles through the civil rights movement by donating \$10,000 in new books to HEF through the nonprofit **Diversify the Classroom**.

"I never, not one time in my life growing up, saw a book with a black or brown child in it," said Brian's mom, Leola Williams Butler.

The donation will ensure young readers at eight schools have access to books and students of all races can see themselves reflected in the characters.



The Marine Toys for Tots Foundation generously donated 10,000 Scholastic books to HEF through our mutual partnership with **Kids in Need Foundation**.

Teachers from our highest needs schools picked up the free books for their students while shopping at our Teaching Tools Resource Center.

Through **The Junior League of Tampa's** #DonelInADay grant and HEF funding, we delivered 600+ books to K-5th grade students at Palm River Elementary.

The "Building Culturally Responsive Classrooms" project helped to update classroom libraries and positively impacted the entire school.



Promoting College and Career Pathways

Our vision is that all students in Hillsborough County Public Schools will graduate and be prepared with the skills necessary for postsecondary, career and life success.

HEF's Take Stock in Children program, **one of the largest mentoring programs in Tampa Bay**, supports students' dreams of continuing their education after graduation by providing:

- **A caring volunteer mentor.**
- **Guidance from a HEF College Success Coach.**
- **The opportunity to earn at least a 2-year college scholarship.**



Hillsborough Education Foundation
Take Stock in Children Program
is rated **GOLD!**



This is the third year in a row that HEF's Take Stock in Children team has earned **Gold Level Performance**, which is the highest rating available from the TSIC state office, as well as the **Luminary Award** for receiving a perfect score on our Balanced Score Card.

After a year of all virtual mentoring, staff transitioned to a hybrid model of in-person and virtual mentoring to ensure students received regular mentoring sessions, quality support from our college success coaches, college & career readiness workshop opportunities and more.

328 students

supported in our mentoring program

Our dedicated mentors devoted their time to

5,246 mentoring sessions



100%

 of the 73 seniors in HEF's mentoring program graduated in 2022.

Compared to 78.3% of their at-risk peers in Hillsborough County.
*Most recent data: 2021, Florida Department of Education

"The most rewarding part of mentoring for me is making a positive impact in my mentee's life. It is an absolute pleasure to grow a trusted relationship with my mentee and provide advice and support to him as he navigates the ups and downs of life."

-Kyle King, Mentor

"I'm excited, yet anxious for the journey, but know I'm prepared because of Take Stock. **The mentoring program has been the driving force when it comes to my success in school.** To see the potential you have in yourself and then to know there are other people who also see that potential and are willing to help you get there—it's wonderful."

Marie Kolombia, Wharton High School 2022 Graduate, USF Freshman



Supporting Post-Graduation Success

HEF awarded **\$1.3 million** to 2022 graduates through our Take Stock in Children mentoring program and Community Scholarships.

It can be stressful for students to figure out how to cover costs to continue their education after graduation—whether it is at a university, community or technical college or certification program.

This year, Hillsborough Education Foundation was able to reduce that financial strain on families and support students' postsecondary dreams for **300+ Hillsborough County seniors** through the generosity of our business partners, community organizations and individual donors.



"This scholarship is important to my education because college can be expensive. I have a twin sister and my family cannot afford two tuition payments. I am a first-generation student and my mother passed away from cancer when I was 12. Everything I'm doing today is to make her proud. I am extremely grateful that I received this scholarship."

*- Zaria, HEF Community Scholarship Recipient
UCF student, interested in becoming an OB-GYN doctor*



"All students deserve to further their education, but not all students can afford to do that. If we each give what we can, together we help many kids build fulfilling lives."

- Candy Olson

The **Candy Olson Grow our own Teachers Scholarship** provides a scholarship to a graduating senior majoring in Education who commits to teach at a Hillsborough County public school.



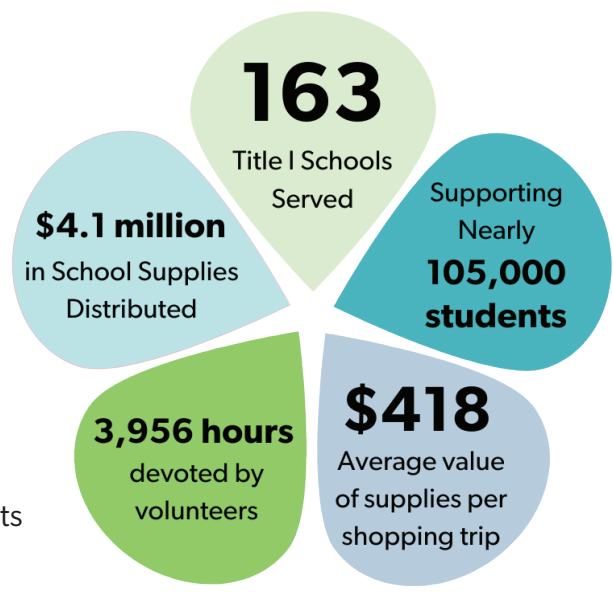
150+ volunteer reviewers spent **600+ hours** reading and scoring the **1,302 applications** we received for 2022 Community Scholarships.



Supplying Essential Learning Tools

It was a record-setting year for our Teaching Tools Resource Center—providing **\$4.1 million** in critical school supplies and classroom resources to teachers in our highest needs schools.

Throughout the school year, thousands of teachers have the opportunity to shop for free core supplies to help ensure all students have access to the tools they need for academic success.



Our store, located at HEF, is primarily stocked through the generous donations from businesses and individuals who hosted more than **180 supply drives** for the 2021-2022 school year.

“You have cut down on my supply spending and allowed me to be better prepared to meet my students’ needs. I hand out pencils daily and 95% of my students now turn in work, compared to 60% before.”

– Teaching Tools Shopper

95% of teachers say having access to free supplies from HEF’s Teaching Tools Resource Center has been very important for their ability to create a more equal learning environment.



HEF provided nearly **300,000 packages of Lysol wipes** to schools in the district through our partnership with Kids in Need Foundation and a donation from Reckitt Benckiser, LLC valued at more than **\$1.4 million** to help keep schools clean and staff and students healthy.

Teaching Tools strategically supported **45 of our highest needs schools** with items to incentivize positive behavior and classroom engagement. Volunteers made **202 deliveries** directly to schools to support this initiative.



Connecting the Community to Our Classrooms

A community engaged in making education a priority will transform Hillsborough County.

HEF connects the community to our classrooms through our initiatives that support principals' and teachers' innovative ideas, better engage student learning to prepare our future workforce and help strengthen public education.

2021-2022 School Year

\$365K

for educational
and enrichment
opportunities

27,386

students
impacted

Our **School and Classroom Enrichment grants** provide funding beyond what school budgets may allow for creative educational opportunities that positively impact students' academic performance.

Through our online platform, **HEF and the community funded 121 grants** this year to enhance learning through curriculum and school enrichment activities.

Adventures in Literacy FLASHLIGHT FRIDAYS



Cleveland Elementary
Reading Resource Teacher
Dawn Grossman requested funding to help grow students' love of reading, sharing:
**"My scholars are finally excited about reading!
The incredible results far exceeded expectations."**



**Flashlight Fridays
have improved
students'
reading fluency,
accuracy and
comprehension.**



Our **CEOs in Schools** program in partnership with Vistra Communications and the district pairs local business leaders with principals to spend an unforgettable day in an elementary school experiencing the challenges and opportunities facing our students, teachers and public schools.

In its third year, this innovative initiative forges year-round relationships to make a lasting impact on our next generations of workers and leaders.

**100% of teachers
say grant projects
increased their
capacity to deliver
effective strategies
and increased student
engagement.**



Celebrating Excellence in Education

The impact that teachers and school staff have on students is one that lasts a lifetime. The nearly 24,000 employees in Hillsborough County Public Schools are shaping children's lives and the future of our community and deserve to be supported and celebrated. To show our gratitude for their hard work and dedication, this school year HEF funded \$245K in teacher support, recognition and development opportunities.



Our annual Excellence in Education Awards honors our amazing educators and school staff who go above and beyond to support students' success.

At this year's "Let's Glow Crazy" neon-themed event at the Straz Center, we celebrated **675 educators and school personnel** nominated by their schools as the Teacher of the Year, Ida S. Baker Diversity Educator of the Year and Instructional Support Employee of the Year with a winner being named in each category.

Congratulations to our 2022 Winners

Ida S. Baker Diversity Educator of the Year
Benigno Lopez
 Shields Middle School
 Success Coach

Teacher of the Year
Laura Widerberg
 Armwood High School
 Biology Teacher

Instructional Support Employee of the Year
Faith Smith
 Temple Terrace Elementary
 Parent Liaison Aide



Let's Glow Crazy!

Celebrating Hillsborough County's Principal and Assistant Principal of the Year



Principal of the Year
Ryan Moody
 Oak Park Elementary

Assistant Principal of the Year
Tonya Colston
 McLane Middle



Teacher Appreciation Week

We are grateful for our teachers the entire year but go all out to celebrate them during Teacher Appreciation Week in May.

21 businesses partnered with HEF and the district to offer teachers deals and discounts for meals and entertainment.

Tampa Mayor Jane Castor, and sports figures like Bucs player Tristan Wirfs recorded special video messages.

We had **1,500 entries** from teachers in our social media gift card giveaways and five teachers each won a \$500 School and Classroom Enrichment grant. Plus, Teaching Tools surprised shoppers with sweet treats throughout the week.

Development and Certifications

This year, HEF expanded our support to Teachers of the Year through professional development to help advance their learning. 2021 Teacher of the Year, Laura Meehan, brought together **70+ nominees** for a day-long leadership training.

17 teachers received financial support from HEF to participate in ASPIRE! professional development as they pursued national board certification.

HEF sponsored a 2-day optional **training for teachers** organized by HCPS that focused on the importance of diversity, equity and inclusion.

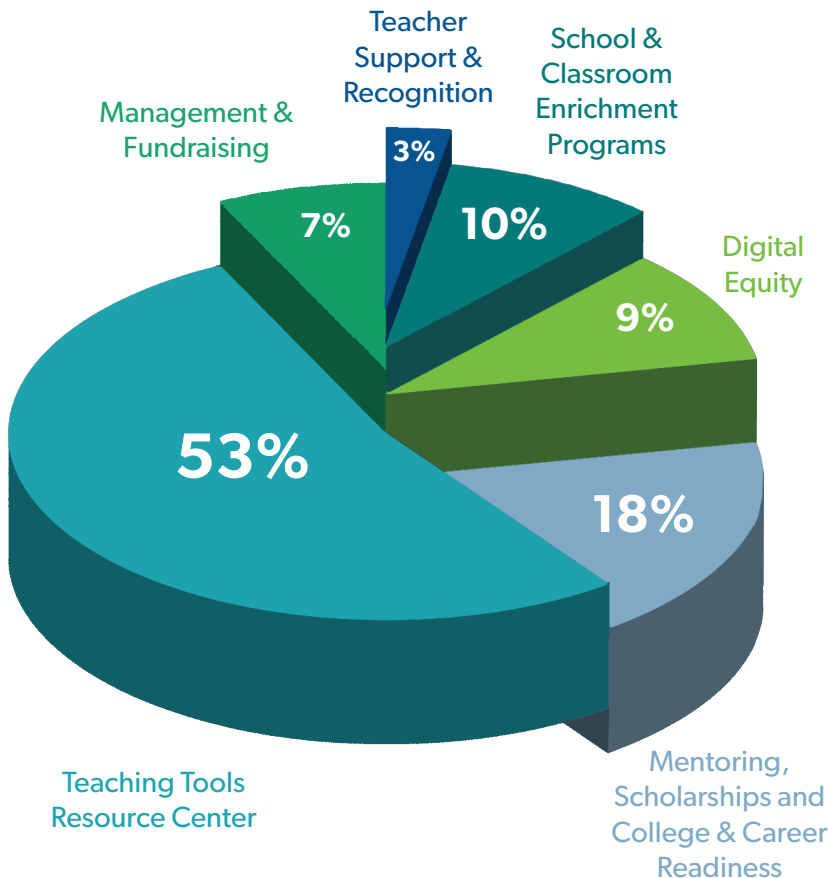


Investing in Public Education

Financial Summary

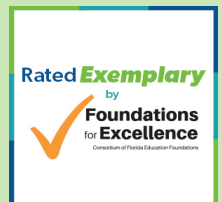
Fiscal Year Ending June 30, 2022, per audited statements		2022	2021
PUBLIC SUPPORT AND REVENUE			
Contributions	26%	\$2,360,728	\$2,158,184
Fundraising Event, net	3%	\$248,345	\$232,848
Donated Goods & Services	47%	\$4,202,860	\$2,738,371
Government Grants & Other Grants	31%	\$2,809,394	\$1,677,650
Investment Income	-7%	\$(665,465)	\$991,108
TOTAL PUBLIC SUPPORT & REVENUE		\$8,955,862	\$7,798,161
PROGRAM SERVICES AND EXPENSES			
Program Services	93%	\$8,195,700	\$6,361,860
Management and General	3%	\$246,446	\$232,108
Development/Fundraising	4%	\$322,664	\$308,874
TOTAL PROGRAM SERVICES & EXPENSES		\$8,764,810	\$6,902,842

Programs & Expenditures



93 CENTS

of every dollar you invest is used directly for our initiatives. Our dedication to being responsible stewards of donors' contributions has earned these accolades.



THANK YOU IN-KIND PARTNERS!

Thank you to **290** individual and corporate partners who donated more than **\$2.3 million** worth of in-kind gifts in 2021-2022.

Because of our generous partners, we were able to help nearly 105,000 students in Hillsborough County in the 2021-2022 school year.

Thank You to Our **Generous** 2021-2022 Partners!

\$100,000+

Caspers Company*
Children's Board of Hillsborough County*
Community Foundation Tampa Bay, Inc.
Consortium of Florida Education Foundations
Helios Education Foundation
Mary and Bob Sierra Family Foundation, Inc.
Spurlino Foundation
Suncoast Credit Union*
Take Stock in Children

\$75,000+

Hillsborough Co. Social Services Department

\$50,000+

Citi*
Hillsborough County
Rays Baseball Foundation, Inc.*
TECO Energy, Inc.
The Mosaic Company

\$25,000+

Amgen Foundation
Aon
Bristol-Myers Squibb*
Bucs Care Foundation, Inc.
Friends of U.S. Military Families, Inc.
Gamma Theta Omega, Inc.
Generate Capital, Inc.
Horus Construction Services, Inc.
Humana, Inc.*
The Vinik Family Foundation
Publix Super Markets Charities*
Publix Super Markets, Inc.
Skanska USA Building, Inc.
Think Big for Kids
William A. Gregory, Jr. Foundation, Inc.

\$10,000+

Ajax Building Company, LLC
All Phase Electric and Maintenance, Inc.
Amscot Financial*
Bay Area Neurology
Bloomin' Brands, Inc.*
Coca-Cola Beverages Florida
Code.org
Communications International, Inc.
CI Group*
Crowe Foundation
Kate DeMarco & David Amis
David Katcher
Fleischman Garcia Architecture

Florida Blue
Hancock Whitney*
Hillsborough Classroom Teachers
Association, Inc.
Hillsborough Co. Public Schools Employees
Kim Brannan
Long & Associates Architects/Engineers, Inc.*
Mabel and Ellsworth Simmons Charitable
Foundation, Inc.
Mike Evans Family Foundation
Saunders Foundation
Tampa Bay Seminole Club
Tampa Kiwanis Foundation, Inc.
The Billy Turney Foundation, Inc.
The Kilene Kelly Group, Inc.*
Tierra, Inc.
Verizon
VMG Construction, Inc.
Wells Fargo Foundation

\$5,000+

A.D. Morgan Corporation
Advanced Drying System
Allstate Construction, Inc.
Anston-Greenlees, Inc.
B&I Contractors, Inc.
Carastro and Associates, Inc.
Christian Legacy Foundation, Inc.
Christopher and Cindy Taylor
CW's Gin Joint
DC Studio Architecture and Planning
Derrick Brooks Charities, Inc.
Dirk and Natasha Ziff
Envision
EWI Construction, LLC
Florida Polytechnic University
Fraser MacKechnie
Geico
Gerdau Corp.
Gilbane Building Company
Harvard Jolly, Inc.
Hepner Architects, Inc.
Hill Ward Henderson
JE Dunn Construction Company
John Lynch Foundation
Kelly Educational Staffing
L V Thompson Family Foundation
Mary Sue and Fred Rothenberg
Moretrench Industrial
Nielsen
Nielsen Foundation
Peninsula Steel
Phoenix Engineering Group
Ranon & Partners, Inc.
Reno Building, LLC

Ringling College of Art and Design
Scott Myers
Shumaker Loop & Kendrick*
Strategic Property Partners, LLC
Tampa Bay Trial Lawyers Association
Tampa Urban Young Life: City Bridge
The University of Tampa
Walbridge Construction
Wannemacher Jensen Architects, Inc.
Wharton Smith, Inc.
Wilder Architecture, Inc.
Women in Defense Tampa Bay
Zyscovich, Inc.

\$2,500+

Americana Elevators
Angelo's Aggregate Materials, LTD
Ashberry Commercial Water
Ed Sharpe*
Automated Building Control Systems, Inc.
Baker Barrios Architects, Inc.
Barr & Barr
Betty Castor and Samuel Bell
Catalina Marketing Charitable Foundation
Countryside Glass & Mirror
CPPI
Creative Contractors, Inc.
Davis Islands Garden Club, Inc.
Design Styles Architecture*
DuCon Construction, LLC
Energy Air, Inc.
Envision Lighting System
Ford & Associates, Inc.
G. Randall James
George Edgecomb Bar Association
Gordon Gillette
Grow Financial Federal Credit Union*
Gulf Coast Thermo King
Hillsborough Association of School
Administrators
Hillsborough Co. Sheriff's Office
Charities, Inc.
Hillsborough Co. Tax Collector*
JP Wiseman Construction Services, LLC
Kevin and Susan Johnson
Keys All Area Roofing
Lockheed Martin Corporation
Manhattan Construction, Inc.
Metrohm USA, Inc.
Mike Zondlo
Andrew Harris MBA, MHA
Sylvia L. Ellis Phenegger
Pacific Retail Property
Phi Beta Kappa Alumni Association
of Tampa Bay

Regions Bank
 Rowe Architects, Inc.
 SCS Engineers
 Service Works Commercial Roofing
 Shagbark Properties
 Sherloq Solutions, Inc.
 Specialty Solutions Southeast, Inc.
 Suffolk Construction
 Tampa Bay Times
 Tampa Bay Trane
 Tannia G. Peeples
 Tate Kubler
 The Bank of Tampa
 The Benevity Community Impact Fund
 Triad Foundation
 Tru Star Salon Services, LLC
 Upper Tampa Bay Education Foundation, Inc.
 VALIC Financial Advisors

\$1,000+

AAA Restoration and Builders
 Amazon.com Services, LLC
 Amy Gregory
 Anita Humphrey
 Anne Lenz
 Arlethea and Inniss Goden
 BAL Engineering, Inc.
 Bard Manufacturing
 Bay to Bay Title
 Bob and Mary Martinez
 Captiva MVP Restaurant Partners
 Captrust Financial Advisors
 Carl Brannan
 Centegix
 Christopher Kiander
 Ciminelli Real Estate Services of Florida, LLC
 CKT Asset Management Company
 Clinton and Emily Morrell
 Coldwell Banker Realty Cares Foundation
 Colen Built Development
 Corey and April Neil
 David Lennon
 Dennis Jones
 Elizabeth Reynolds
 Encore Capital Group, Inc.
 Florida Oral & Maxillofacial Surgery
 Florida West Coast Credit Union
 FloridaMakes
 Gale Associates, Inc.
 Gopher Resource
 GSA Security, Inc.
 Industrial Safety Institute
 James-Rivard Pontiac-GMC
 Joel and Janet Stephens
 John and Ann Marie Vaughan
 Junior League of Tampa, Inc.
 Kaylee Misch
 Kevin & Jennifer Marshall
 Kevin and Cindy Sutton
 Kim and Sean Jowell
 Kimberlee and Jeffrey DeBosier
 Kimley-Horn & Associates, Inc.
 Klace & Company Real Estate

Laura and Benjamin West
 Mark and Anne Kaiser
 Mary Greco-Smith
 Marybeth Palmer
 McKinstry
 McKinstry Charitable Foundation
 Michael and Hope Poland
 Mr. and Mrs. Crab Juicy Seafood Bar
 Michael E. Pheneger
 Michael Wilson
 Ray A. Hodorski
 PBA Design Group, Inc.
 Rasmussen University
 Rebecca and Edward Savitz
 Robert W. Baird & Co., Inc.
 SESCO Lighting
 Shawn McCranie
 Sherry Thomas-Dertke
 Stephen and Diana Sessums
 Sue M. House
 Tampa Bay Rays
 The CarMax Foundation
 Thomas and Alexandra Ray
 Yvette Tremonti
 Valley National Bank
 Wayne Automatic Fire Sprinklers, Inc.

\$500+

Adrienne Dungee
 Ardurra Group, Inc.
 Bernard and Laura Gaffney
 Bruce Faulmann
 Bruce Kelley
 Campo Engineering
 Charities Aid Foundation of America
 Dave Pickles
 Donna McGrew
 Eric Bailey
 Ernst & Young, LLP
 George Brown
 Gordon Food Service
 Gwen Drapela
 H2U of Brandon
 Hapner Law
 Hillsborough Community College
 Foundation, Inc.
 Hillsborough Title
 Homer Brown
 Jack Whitwam
 Key Engineering Associates
 Kimberly Thresher*
 Laura Hunter
 Marva Crenshaw
 Mary Lou Whaley
 Maureen Loach
 Michael Nash
 Michael Stout
 Michele Pinson
 Monica Verra-Tirado
 David Lair
 Sharon Hall
 Rosemary H. Henderson
 Patel Greene & Associates

Peggy Land
 Pirtle Construction Company
 R L Burns, Inc.
 Junior Achievement of Tampa Bay
 Robert Grieb
 Rough Riders, Inc.
 Samuel Brannan
 SIE Vending
 Southern Oaks Insurance
 Susan Baldwin
 Ted and Roberta Stasney
 Tony Shahnam
 Ultra Intelligence & Communications

\$250+

Adelaide Sink
 Alison Fiol
 Betty Hardy
 Brandon R Foster Coaching
 Carol Turpin
 Christopher Timmerman
 Claudia & Woody Isom
 David Meadows
 Doug & Mindy Taylor
 Joyce G. Haines, PhD
 Eddie and Sylvia L. Adams
 Edward Weaving
 Entheos Foundation
 Ernest Dubose
 Faceplant Dreams
 Fentrice Driskell
 Fleet Acquisitions
 Frameworks of Tampa Bay
 Future Florida Scientists
 Gilbert Garcia Group, P.A.
 Haystax
 James Roberts
 Jane Castor
 Jeffrey and Amy Rettig
 Jorge Hernandez
 Ken Sale
 Kendra Scott - Hyde Park
 Linda Porter
 Luis Vargas
 Marie Whelan
 Marilyn Thaxton
 Marsha Rydberg
 Mary Graham
 McKinney Law Firm
 Michael Arndt
 Michael Taylor and Thomas Rao
 Christine W. Robinson
 Gila Durham
 Rebecca Hendrickson
 Peter Lopez
 Robert and Christine Cohen
 Robert Hinsch
 Ryan Bianco
 Sabrina Gates
 Sagicor Life Insurance Company
 Tara Geise (The Geise Family)
 Times Publishing Company - Employees
 Trickey Jennus

*Made in-kind donations in addition to monetary contributions



BOARD OF DIRECTORS

OFFICERS

Drew Marshall, Chair
CI Group

Chris Taylor, Vice Chair
CT Equity Group, LLC

Mark Fernandez, Treasurer
Stonehill Innovation

Joyce Haines, PhD, Secretary
Retired Educator

Kim Jowell, CEO
Hillsborough Education Foundation

DIRECTORS

Maureen Butler, PhD
Vistra Communications

Gordon Gillette
Strategy Consultant

Michael C. Poland
Community Volunteer

Betty Castor
Former Florida Commissioner
of Education & Former
USF President

Stacy Hahn, PhD
Hillsborough County
School Board

Brian Richeson
Tampa Bay Rays

Tommy Chuck
iHeartMedia Tampa Bay

Sterling Ivey
Citi Tampa

Anthony Rolle, PhD
University of South Florida

Bob Conigliaro
Caspers Company McDonald's

G. Randall James
The James Law Group, P.L.

Mary Sue Rothenberg
Community Activist

Addison Davis
Hillsborough County
Public Schools

Rob Kriete
Hillsborough Classroom
Teachers Association

Sean Shaw
Merlin Law Group

Rep. Fentrice D. Driskell
Florida House District 63

Tate Kubler
Ernst & Young, LLP

Ted Stasney
Marketing Research Services

Bruce Faulmann
Tampa Bay Times

Dr. Anne Lenz
Pediatric Endocrine Associates

Joel K. Stephens
Thomas Financial Group

Sol. J. Fleischman, Jr.
Fleischman Garcia Architecture

Fraser MacKechnie
Amscot Corporation

Kevin H. Sutton
Hill Ward Henderson

Nikki Foster
The Mosaic Company

T. Corey Neil
The Bank of Tampa

Kimberly D. Thresher, Esq.
Shankman Leone, P.A.

Jackie Gilbert
Suncoast Credit Union

Chon Nguyen
Newgentek

Yvette Tremonti
Moffitt Cancer Center

Mandy Weitknecht
Skanska

EMERITUS

Tom R. Dorety

Doretha Edgecomb

Sue House

DJ Johnson

Gov. Bob Martinez

As of October 2022

Interested
in staying
involved
throughout
the year?

EducationFoundation.com

(813) 574-0260

2306 N. Howard Avenue
Tampa, FL

Like, Share
and Follow Us:



/EducationFoundation



@HillsEduFnd



@HillsEduFnd



Hillsborough Education
Foundation