



**SCOPE**

Student Center of Postsecondary Exploration

This program is made possible through the generosity of:

**Suncoast**  
Credit Union

**HCA Florida**  
Healthcare®

**United Way**



**2023-2024**

# IMPACT REPORT

# Table of Contents

4

## Unlocking Opportunities for *Students*

- ..... Student Center of Postsecondary Exploration (SCOPE)
- ..... Transforming Early Literacy Initiative (TELI)
- ..... Digital Equity
- ..... Take Stock in Children Mentoring Program
- ..... Senior Scholarships

6

## Investing in *Teachers*

- ..... Teaching Tools Resource Center
- ..... School & Classroom Enrichment Grants
- ..... Teacher Recognition: Excellence in Education

8

## Strengthening *Public Schools*

- ..... CEOs in Schools
- ..... Advocacy
- ..... Family Literacy Workshops
- ..... Strengthening Schools Through Early Literacy

10

## Our *Generous Partners*

11

## Our *Financial Overview*

## Our Mission

*To ensure every student in Hillsborough County receives an outstanding public education that equips them for a fulfilling future.*

*Hillsborough County Public Schools is one of the best places to learn and teach — where 100% of students graduate with the ability to pursue anything they can dream.*

## Our Vision



# A Note From Our Leaders

This past year has been one of transformative growth and progress for Hillsborough Education Foundation. As we navigate the evolving landscape of education, we have remained committed to our mission of empowering students and educators across our community. This year's Impact Report captures the strides we've made and the lives we've touched through our programs and initiatives, showcasing the meaningful difference we can make when we work together.

A key milestone this year was the expansion of our Student Center of Post-Secondary Exploration (SCOPE) program. The success at King High School inspired us to open a second location at Brandon High School, where, in just a few short months, we supported 158 students in their journey toward higher education and career readiness. This expansion is only the beginning of our vision to bring SCOPE to more high schools across Hillsborough County, with plans to open a total of 6 centers by 2026.

Our commitment to early literacy has also continued to flourish. This year, our Transforming Early Literacy Initiative (TELI) program impacted over 1,200 students and 78 Early Childhood Teachers across 12 high-needs schools. With over 1,200 hours of coaching and professional development provided to educators, we are helping to equip our youngest learners with the skills they need to succeed. Additionally, through partnerships with the Consortium of Florida Education Foundations (CFEF) and the New World Reading Initiative (NWRI), we hosted 10 Family Literacy Workshops, engaging 283 parents and students through shared

reading activities. TELI's expansion to two more schools this coming year further highlights our dedication to early literacy, which is crucial to a child's long-term success.

This year has also marked a period of reflection and renewal for our organization. We have redefined our mission, vision, and values to better align with our goals and the needs of the community. These updates are reflected throughout this report, demonstrating our commitment to consistently maximizing our efficiency and overall impact.

None of these accomplishments would have been possible without the strong support of our community. We are deeply grateful to everyone who has been part of this journey. Together, we are building a brighter future for the students of Hillsborough County and a stronger, more resilient community.



*Anna Corman*  
Anna Corman  
HEF President & CEO



*Chris Taylor*  
Chris Taylor  
HEF Board Chairman

## Our Values

*Values ground what we believe and guide how we act. We have five core values:*



**We put students  
and teachers first.**



**We relentlessly  
pursue equity.**



**We approach  
challenges creatively.**



**We work  
collaboratively.**



**We uplift  
each other.**

# Unlocking Opportunities for Students

## Student Center of Postsecondary Exploration

This year, our SCOPE initiative made remarkable strides in supporting students as they explore their college and career options. Located at King and Brandon High Schools, SCOPE centers provide students with personalized guidance and resources to help them plan for life beyond high school.



**478 students** received 1:1 coaching at our SCOPE centers, empowering them to make informed decisions about their future.



**362 students** participated in college visits, career chats, and informational workshops, gaining real-world insights into a variety of career paths.



Among surveyed students, an impressive **91% reported making progress** in their postsecondary planning journey.

Our efforts also included **12 college admission sessions**, **13 classroom presentations** on financial aid, FAFSA, and college planning, and **4 career chats** at the SCOPE King site—further demonstrating our commitment to helping students prepare for the future. We also celebrated a major milestone with the ribbon-cutting at Brandon High School, which served **158 students** in the limited time it was open.



**“The major way SCOPE helped me was in completing the FAFSA. They are the reason I was able to get my financial aid.”**

*- Hailey Cousin, Brandon High graduate and current USF student*

## Transforming Early Literacy Initiative (TELI)

TELI is a groundbreaking program reshaping the landscape of early childhood education. Now in its second year, but its first full year of operational deployment, TELI has already made a substantial impact. In the 2023-2024 school year, the initiative reached **1,279 students** and provided support to **78 Early Childhood Teachers** across **12 high-needs schools**.



**1,200 hours**

of coaching and professional development provided to teachers.



**80 percent**

of teachers reported increased student participation in literacy activities.



**80 percent**

of administrators observed improved student engagement.

## Digital Equity

We are dedicated to promoting digital equity by ensuring at-risk students have access to the technology and resources they need for academic success. Many students in our community face challenges due to limited access to the internet and devices at home. By collaborating with school counselors, teachers, and administrators, we ensure that the students most in need receive the support they deserve.

**764**

students provided with computers, tech resources, & connections in 23-24.

**6,334**

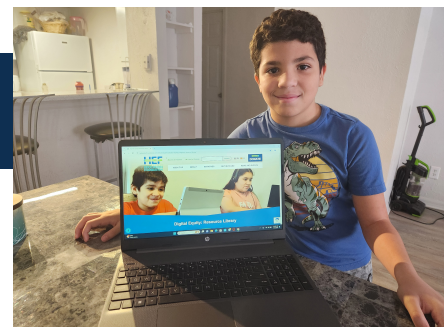
students equipped with devices & services since April 2020.



Completed a grant-funded initiative with HCPS, providing critical services to **100 homeless students**.



**96% of parents and guardians** reported increased involvement in their child's education.





# Take Stock in Children

The Take Stock in Children program continues to make an extraordinary impact in our community by empowering students to achieve academic and personal success. Through mentoring, scholarships, and college readiness support, we provide students from low-income families with the resources and guidance they need to break the cycle of poverty and reach their full potential.



A total of **\$586,221 in scholarships** awarded, helping to pave the way for students to pursue higher education.



An impressive **97.5% of our senior class graduated high school.**



**5,075 mentoring sessions** completed by **245 active volunteer mentors**, demonstrating the commitment and dedication of our volunteers.



**314 students served** through **905 College Success Coach visits**, ensuring personalized support throughout the school year.



Hillsborough Education Foundation's  
Take Stock in Children Program is rated  
**GOLD!** ★★★★★



In addition to academic support, **194 students** were given access to critical college readiness opportunities, participating in **15 college exposure experiences**, which included **12 virtual college tour webinars** and **3 in-person tours** at the University of South Florida, University of Central Florida, and Florida Polytechnic University.

**"The best part of TSIC is having the tremendous support within arm's reach, as well as getting to meet so many genuinely kind people who have guided me in multiple ways."**

- Melanie Naranjo-Bravo

Through this program, students are not just dreaming of a better future—they're achieving it.

## Senior Scholarships

This was a milestone year for Senior Scholarships, showcasing remarkable growth and impact. With the support of dedicated partners and volunteers, we were able to expand our reach and provide life-changing opportunities for students to pursue higher education.

**\$905,626** awarded in scholarships to deserving students.



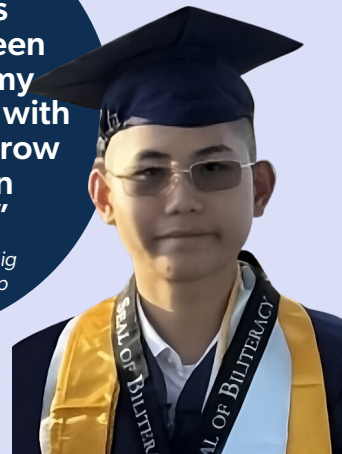
A **250% increase** in the number of applicants seeking technical college scholarships.



The total value of scholarships awarded saw a **40% increase** over the previous year.

**"Thanks to the support of this program, I've been able to pursue my educational goals with confidence and grow into the person I aspire to be."**

- Matthew Major, Think Big Expect More Scholarship recipient



# Investing in Teachers

## Teaching Tools Resource Center

The Teaching Tools Resource Center (TTRC) plays a vital role in ensuring that students have the supplies they need to succeed while alleviating the financial burden on teachers. By providing essential school supplies at no cost, we prevent teachers from having to reach into their own pockets to pay for the resources their students cannot afford.

# \$3,474,401

worth of school supplies and resources were provided to teachers across Hillsborough County in 23-24.

# \$476

was the average value of in-person shopping trips, an increase from the previous fiscal year.



Supported **259 schools and educational sites** throughout the year.



**48 schools** were made eligible for online shopping.



We consistently fulfilled **250 online orders per month**, with the **average value of each online order increasing to \$218**.



**511 volunteers** contributed a collective **4,528 hours** to support the TTRC's operations.



# 96%

of teachers agreed or strongly agreed that the resources provided by the TTRC positively impacted their classrooms.

# 98%

of teachers agreed or strongly agreed that supplies from the TTRC allowed them to enhance their use of effective instructional strategies.



"I am deeply grateful that I won't have to personally fund the school supplies—specifically, notebooks, loose-leaf paper, pencils, and cap erasers—for my morning math students and my gifted students."

- Lisa Lawson, Claywell Elementary  
Gifted Teacher

### Reaching every desk: program impact by the numbers

# 153,544

students impacted by the supplies provided through the TTRC during the 2023-2024 school year.

# 6,686

unique shops, an **18.57% increase** from last year.

# 3,150

unique teachers were served, a **20% increase compared to the previous year**.





# School & Classroom Enrichment Grants

This year, our School & Classroom Enrichment Grants program provided crucial funding to enhance the educational experiences of students across the district. **With a total of \$281,731 awarded**, we supported a wide range of innovative projects that brought hands-on learning and deeper engagement to classrooms.



A **20% increase in funding** over the previous year, allowing for more impactful projects.



This funding reached **31% more students** and impacted **17% more schools** than in the 2022-2023 school year.

**"These tools greatly enhanced the learning experience and kept students engaged throughout the year."**

- Stephen Kelly, King High Biology Teacher

Spoto High Weather Station Project

**950**  
students impacted

King High Marine Ecology Project

**170**  
students impacted

East Bay High Barbering Program

**42**  
students impacted



Through these grants, we continue to support innovative projects that deepen student engagement, enhance learning, and foster a sense of community. The impact of these initiatives extends far beyond the classroom, equipping students with real-world skills and inspiring their academic journeys.

## Teacher Recognition: Excellence in Education

The 2024 Excellence in Education (EIE) Awards was a remarkable celebration of the dedication and impact of our educators. This year's event brought together **1,222 guests** at the Straz Center for Performing Arts to honor the outstanding teachers and instructional staff within Hillsborough County Public Schools.

**626 nominees were narrowed down to 13 finalists across three categories:**

- Teacher of the Year
- Ida S. Baker Diversity Educator of the Year
- Instructional Support Employee of the Year

On February 1, 2024, the finalists were celebrated for their achievements, with each made to feel like a "rockstar."

**Congratulations to our 2024 winners!**

**Dr. Clayton Nylund**

Teacher of the Year

**Dr. Ilfault Joseph**

Ida S. Baker Diversity Educator of the Year

**Maria Ortiz**

Instructional Support Employee of the Year





# Strengthening Public Schools

## CEOs in Schools

Each year, nearly 150 Tampa Bay area CEOs step into the shoes of Hillsborough County public elementary school educators for an entire day. This immersive experience allows them to see, hear, and engage with the day-to-day challenges and successes that educators and students face. Through this initiative, business leaders gain valuable insights into how schools are preparing the future workforce.

CEOs in Schools is a collaborative initiative led by Hillsborough Education Foundation and Vistra Communications, in partnership with Hillsborough County Public Schools. As part of Vistra's One Day of Change program, this event serves as a catalyst for transformative change, demonstrating the lasting impact that can be made in just one day.

## 145 elementary schools

*were matched with a local business leader in 2024.*

### CEOs in Schools offers widespread benefits:



Students benefit from the opportunity to **meet and interact with positive role models**, seeing firsthand that professionals take a vested interest in their success.



CEOs **gain a new perspective on the challenges and opportunities in public schools**, helping them understand the critical role schools play in shaping the future workforce.



The relationships forged between CEOs and principals often lead to **long-term partnerships that enhance the school environment** and create community-wide solutions.



**"My CEO has helped us gain contacts through the chamber of commerce and is always here to lend a helping hand or to help problem solve for the betterment of our school. We love her!"**

*- Theresa Madill, Principal, Riverview Elementary School*



## Advocacy

HEF is committed to ensuring every student in Hillsborough County receives a quality public education. Our advocacy focuses on investing in public education, supporting teachers, promoting early literacy, and building mentorship programs. In 2024, HEF played a crucial role in passing the millage referendum, a major victory that strengthens Hillsborough County Public Schools.

We engage the community through public forums, media outreach, and partnerships to showcase how public education impacts regional growth and equity. By prioritizing students and teachers, collaborating with partners, and driving support for high-quality education, we continue creating pathways for student success and strong schools.



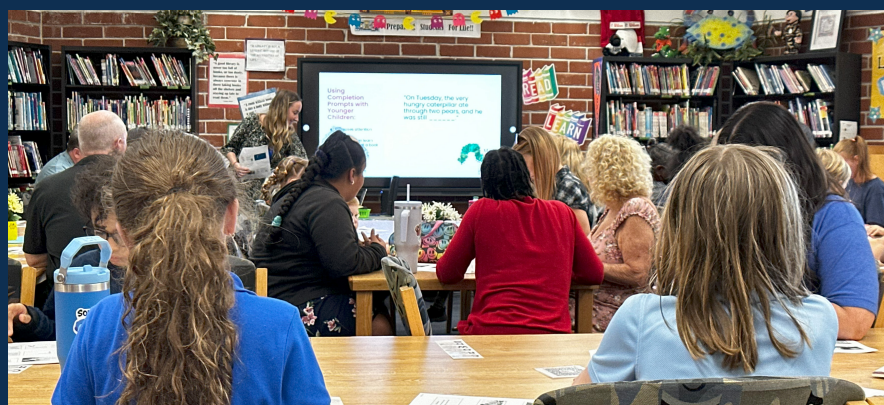


# Family Literacy Workshops

In partnership with the Consortium of Florida Education Foundations (CFEF) and the University of Florida's New World Reading Initiative (NWRI), HEF facilitated a series of Family Literacy Workshops in high-needs schools during the 2023-2024 school year. These workshops offered families practical tools to support early literacy, fostering a deeper connection between home and school learning. Parents gained valuable insights into how they can play a pivotal role in their child's reading development and were introduced to opportunities like the New Worlds Reading Initiative, which provides free books to keep students engaged throughout the year.



**10** Family Literacy Workshops were held, impacting  
**283** Hillsborough County parents and students.



## Strengthening Schools Through Early Literacy: The 2024 Chiaramonte Book Fair

In April 2024, Hillsborough Education Foundation hosted a successful Book Fair at Chiaramonte Elementary School, creating a memorable experience for hundreds of students. Each child received a tote bag filled with school supplies and had the opportunity to select four free books from a diverse range of titles. This hands-on event sparked excitement for reading and helped cultivate a lifelong love for books among young learners.

With third-grade reading proficiency on the decline in Tampa Bay, the need for early literacy support is more urgent than ever. The Book Fair highlighted HEF's commitment to addressing this critical issue by equipping students with tools for academic success during their formative years. By focusing on early literacy, HEF is investing in students' long-term success and helping them overcome educational challenges.

Supported by a generous \$25,000 donation from Old Republic Title, the event also underscored the importance of community partnerships in addressing educational needs. This financial support played a key role in the Book Fair's success, reinforcing a collective commitment to improving literacy outcomes for Hillsborough County students. HEF's continued efforts help inspire a new generation of readers, strengthen schools and empower students through literacy.



# Our Generous Partners

## \$100,000+

Children's Board of Hillsborough County  
Community Foundation Tampa Bay, Inc.  
Consortium of Florida Education Foundations  
Helios Education Foundation  
In Memory of Sharon Hubbard  
Mary and Bob Sierra Family Foundation, Inc.  
The Mosaic Company  
Publix Super Markets, Inc.  
Spurlino Foundation  
Suncoast Credit Union  
Suncoast Credit Union Foundation  
Take Stock in Children  
Think Big for Kids

## \$75,000+

Gopher Resource

## \$50,000+

Allegany Franciscan Ministries, Inc.  
Generate Capital, Inc.  
Rays Baseball Foundation, Inc.  
Skanska USA Building, Inc.  
TECO Energy, Inc.

## \$25,000+

Ajax Building Company, LLC  
Aon  
Citi  
Creative Contractors, Inc.  
Edward Jones  
HCA Florida Brandon Hospital - Medical Staff  
HCA Healthcare - West Florida Division Office  
Hillsborough County Public Schools  
Employees  
Hillsborough Solid Waste Management Dept.  
Horus Construction Services, Inc.  
Ivy Enrichment Foundation of Tampa Bay, Inc.  
The LeRoy Neiman and Janet Byrne Neiman  
Foundation  
Mark Fernandez  
McKinstry  
Old Republic National Title Insurance Co.  
Publix Super Markets Charities  
RSM US Foundation  
United Way Suncoast  
William A. Gregory, Jr. Foundation, Inc.

## \$10,000+

AAA - Auto Club Group  
Aetna Inc.  
Amgen Foundation  
Amscot Financial  
AT&T  
The Beck Group  
The Billy Turney Foundation, Inc.  
Bloomin' Brands, Inc.  
Coca-Cola Beverages Florida  
Crowe Foundation  
Cynthia G. Weiss  
David Amis and Kate DeMarco

Fleischman Garcia Architecture  
Florida Blue  
Friends of U.S. Military Families, Inc.  
Gettel Foundation  
Harvard Jolly, Inc.  
Hillsborough Classroom Teachers  
Association, Inc.  
Holmes Architects  
JE Dunn Construction Company  
Long & Associates  
Architects/Engineers, Inc.  
Mabel and Ellsworth Simmons  
Charitable Foundation, Inc.  
Manhattan Construction, Inc.  
Pfizer Inc.  
Rowe Architects, Inc.  
Scott Myers  
Tampa Kiwanis Foundation, Inc.  
Tierra, Inc.  
T-Mobile  
Upper Tampa Bay Education  
Foundation, Inc.  
Wells Fargo Foundation

## \$5,000+

AAA Restoration and Builders  
A.D. Morgan Corporation  
Advanced Drying System  
B & I Contractors, Inc.  
BankUnited  
Brian & Maureen Butler  
Christina Sullivan  
Christopher and Cindy Taylor  
Corebridge Financial  
CPPI  
Derrick Brooks Charities, Inc.  
Drew Marshall  
GEICO  
Gentleman's Quest of Tampa, Inc.  
Hill Ward Henderson  
Hillsborough Association of  
School Administrators, Inc.  
Hillsborough Community College  
Humana, Inc.  
John Lynch Foundation  
John Riesenburger Family Charitable  
Fund  
Kelly Educational Staffing  
Ken Sale  
LV Thompson Family Foundation  
Mary Sue and Fred Rothenberg  
Men of Vision, Inc.  
New York Life Giving Campaign  
Pepin Distributing Company, LLC  
Phoenix Engineering Group  
Ringling College of Art and Design  
Roosevelt Elementary School PTA  
RSA Consulting Group, LLC  
Sports Club of Tampa Bay, Inc.  
Tannia G. Peeples  
The University of Tampa  
WGI  
Wharton Smith, Inc.  
Wilder Architecture, Inc.  
YA by the Bay, Inc.

## \$2,500+

ABM Education  
Countryside Glass & Mirror  
Dr. Anne Lenz  
Automated Building Control Systems, Inc.  
The Bank of Tampa  
Barr & Barr  
Betty Castor  
Bodine  
The CarMax Foundation  
Center for Technology and Education  
Davis Islands Garden Club  
DC Studio Architecture and Planning  
Elizabeth Reynolds  
Energy Air, Inc.  
Envision Lighting System  
Eric and Gina Bailey  
Fern Kinion  
Ford & Associates, Inc.  
Gamma Theta Omega Chapter of  
Alpha Kappa Alpha Sorority, Inc.  
George Edgecomb Bar Association  
Gilbane Building Company  
Gujarati Samaj of Tampa Bay, Inc.  
Halfacre Construction Company  
Kiewit Infrastructure South Co.  
Matthews Bus Alliance, Inc.  
Mediatechnologies  
Meteor Education  
Michael & Sylvia Pheneger  
Mr. and Mrs. Crab Juicy Seafood Bar  
The Perry Company of 7th Avenue, Inc.  
Phi Beta Kappa Alumni Association of Tampa Bay  
PROCEDEO  
Ranon & Partners, Inc.  
Regions Bank  
Renker Eich Parks Architects  
Reno Boyd Building Co.  
RIPA & Associates  
Rivero, Gordimer & Company  
SESCO Lighting  
SGM Engineering  
Sherloq Solutions, Inc.  
Specialty Solutions Southeast, Inc.  
Tampa Bay Times  
Tampa Bay Trane  
World Champions Ministries, Inc.

## \$1,000+

AIM Engineering & Surveying, Inc.  
Allstate Construction, Inc.  
Andy Bolin  
Arlethea and Inniss Goden  
Ashberry Commercial Water  
BAL Engineering, Inc.  
Bay Area Manufacturers Association  
Bruce Faulmann  
BSA Lifestructures, Inc.  
Carl Brannan  
Charles and Sam Rothenberg  
Cherie Pimento  
Ciminelli Real Estate Services of Florida, LLC  
Darlene Braunschweig  
Donald Altman



Ellison Construction  
Florida West Coast Credit Union  
G. Randall James  
Gale Associates, Inc.  
Gerda Corp.  
Hepner Architects, Inc.  
Hillsborough County Sheriff's Office Charities, Inc.  
Jackie Gilbert  
Jennifer Swindal  
JPMorgan Chase & Co.  
Kendra Scott Hyde Park  
Kenyon & Partners, Inc.  
Kevin and Cindy Sutton  
Kim and Sean Jowell  
Laura and Benjamin West  
**LEVERAGE**  
Margaret Finnigan  
Mark and Anne Kaiser  
Mary Graham  
Mary Odum  
McKinstry Charitable Foundation  
Merck  
Merit Professional Coatings, Inc.  
Michael and Hope Poland  
Michael Nash  
Dr. Mimi Graham  
New York Yankees Tampa Foundation, Inc.  
Office Furniture Solutions of Tampa  
Practice Benefit Corp.  
Prep And Me, Inc.

Rasmussen University  
Shagbark Properties  
Schoolhouse Products, Inc.  
Stephen and Diana Sessums  
Tate Kubler  
Thomas Ray  
Trentalange & Kelley, P.A.  
Valley National Bank  
Williams Automotive Group

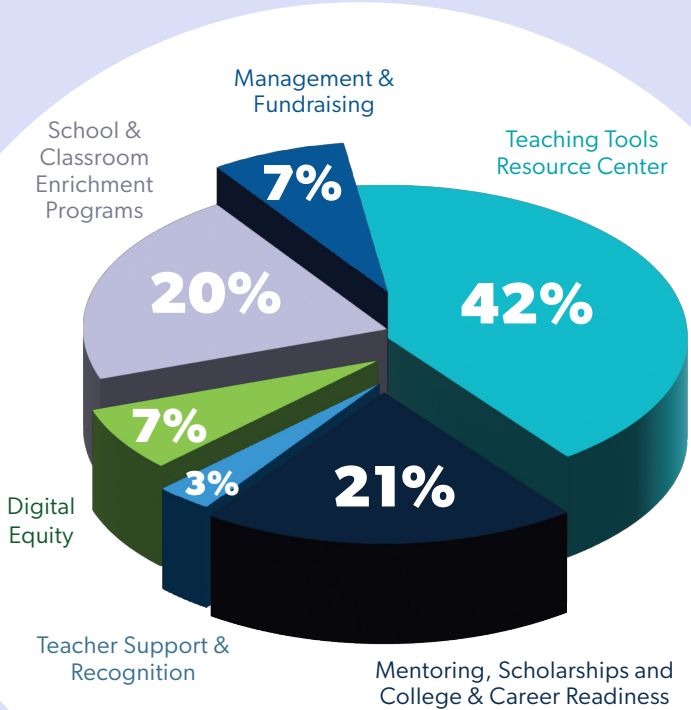
**\$500+**

Andrea E. Zelman, Esq.  
Angie Anthony  
Anna Corman  
Audio Enhancement  
Ayres Associates, Inc.  
Bernard and Laura Gaffney  
Bob and Liana Fox  
Bound to Stay Bound Books, Inc.  
Chris Prentiss  
Clark G. Hobby  
Colin Higgins  
Dallas 1 Corporation  
David Schur  
Debbie Gaillard  
Engineering Matrix, Inc.  
Ernie Morris Enterprises, Inc.  
Florida Education Connection  
Florida Gas Transmission Company, LLC

George Brown  
GivingTrax Foundation  
Greg Grabau  
James Hauth  
Jonathan Osteen  
Judy Bessette  
Kejian Wang  
Key Engineering Associates  
Krewe of Agustina Full Heart Foundation  
Kristin Crawford  
Laura Gross  
Laura Hunter  
LEGO Construction Co.  
Louis Gentile  
MB Drywall Solutions, LLC  
McKinsey & Company  
Michelle Towns  
Patel Greene & Associates  
Quality Roofing, Inc.  
Dr. Robin Roark  
Samuel Brannan  
Scott Gilner  
Tina Tenret  
Torin Cone  
Trickey Jennus  
United Way of Central Indiana  
Valentina Delgado  
Verdex Construction  
VoltAir Consulting Engineers, LLC

# Financial Overview

**94 cents** of every dollar you invest is used directly for our initiatives. Our dedication to being responsible stewards of donors' contributions has earned these accolades.



## Financial Summary

Fiscal Year Ending June 30,	2024	2023
<b>PUBLIC SUPPORT &amp; REVENUE</b>		
Contributions	\$2,788,434	\$2,387,253
Fundraising Events (Net)	\$213,607	\$317,747
Donated Goods & Services	\$3,543,409	\$2,653,263
Government Grants & Other Grants	\$1,783,577	\$1,929,527
Investment Income	\$446,378	\$404,762
Contract Revenue	\$886,103	—
Other Revenue	\$141,791	\$328,492
<b>TOTAL PUBLIC SUPPORT &amp; REVENUE</b>	<b>\$9,803,299</b>	<b>\$8,021,044</b>
<b>PROGRAM SERVICES &amp; EXPENSES</b>		
Program Services	\$9,111,308	\$7,311,488
Management & General	\$265,453	\$393,978
Development/Fundraising	\$304,852	\$328,746
<b>TOTAL PROGRAM SERVICES &amp; EXPENSES</b>	<b>\$9,681,613</b>	<b>\$8,034,212</b>

# Board of Directors

## Officers

**Chris Taylor, Chair**  
CT Equity Group, LLC

**Joyce Haines, Ph.D., Vice Chair**  
Retired Educator

**Mark Fernandez, Treasurer**  
Stonehill Innovation

**Sean Shaw, Secretary**  
Swope, Rodante P.A.

**Anna Corman, President & CEO**  
Hillsborough Education Foundation

## Directors

**Van Ayres**  
Hillsborough County  
Public Schools

**Tina James**  
Florida Blue

**Kim Pietsch-Huff**  
HASA

**Maureen Butler, Ph.D.**  
Vistra Communications

**Barbara Janousek**  
PNC

**Michael C. Poland**  
Community Volunteer

**Betty Castor**  
Former Florida  
Commissioner of Education  
& Former USF President

**Rob Kriete**  
Hillsborough Classroom  
Teachers Association

**Anthony Rolle, Ph.D.**  
University of South  
Florida

**Tommy Chuck**  
iHeartMedia Tampa Bay

**Tate Kubler**  
Ernst & Young, LLP

**Mary Sue Rothenberg**  
Community Activist

**Rep. Fentrice D. Driskell**  
Florida House District 67

**Nina Lacevic**  
Amscot Financial

**Ted Stasney**  
Marketing Research  
Services

**Sol J. Fleischman, Jr.**  
Fleischman Garcia  
Architecture

**Dr. Anne Lenz**  
Pediatric Endocrine  
Associates

**Joel K. Stephens**  
Thomas Financial Group

**Jackie Gilbert**  
Suncoast Credit Union

**Drew Marshall**  
CI Group

**Kevin H. Sutton**  
Hill Ward Henderson

**Stacy Hahn, Ph.D.**  
Hillsborough County  
School Board

**T. Corey Neil**  
The Bank of Tampa

**Kimberly D. Thresher**  
B.C.S. Construction Law  
Shankman Leone, P.A.

## Emeritus

**Tom R. Dorety**

**Doretha Edgecomb**

**Sue House**

**DJ Johnson**

**Governor Bob Martinez**

**G. Randall James**

*Interested  
in staying  
involved  
throughout  
the year?*



**Scan to sign up for  
our newsletter!**

**EducationFoundation.com**  
**(813) 574-0260**  
**2306 N. Howard Avenue**  
**Tampa, Florida**

*Like, share and follow us  
on our socials:*



**/EducationFoundation**



**@HillsEduFnd**



**Hillsborough Education Foundation**

