

IMPACT REPORT



Table of Contents

Unlocking Opportunities for **STUDENTS**

Tech Connect _____	4
Transforming Early Literacy Initiative _____	4
Student Center of Postsecondary Exploration (SCOPE) _____	5
Take Stock in Children Mentoring Program _____	6
Community Scholarships _____	6

Investing in **TEACHERS**

School & Classroom Enrichment Grants _____	7
Teaching Tools Resource Center _____	8
Teacher Support and Recognition _____	9
Hurricane Relief _____	10

Strengthening **PUBLIC SCHOOLS**

Advocating for Public Education _____	11
Race for Education _____	11
CEOs in Schools: 1 Day of Change _____	12

Our **FINANCIAL OVERVIEW** _____ 13

Our **GENEROUS PARTNERS** _____ 14

A Note From Our Leaders



ANNA CORMAN
HEF President & CEO



SEAN SHAW
HEF Board Chair

At Hillsborough Education Foundation, we believe that public education is the cornerstone of a thriving community. Our mission drives everything we do—from expanding access to essential resources to advocating for programs and partnerships that support students, families, and educators. This past year, that commitment guided our response in moments of challenge and progress alike.

Throughout the year, our core programs continued to meet students and teachers where they needed support most. The **Teaching Tools Resource Center** put school supplies into the hands of educators, and **Tech Connect** kept bridging the digital divide—together impacting tens of thousands of students across Hillsborough County. These programs ensured learning never lost momentum, even amid uncertainty and change.

That same spirit of unity fueled milestones that will shape education for years to come. The expansion of the **Student Center of Postsecondary Exploration (SCOPE)** into three additional high schools gave more students access to personalized guidance and resources to plan their futures. At participating schools, FAFSA completion rose by a combined 39%—a critical step in making college and career pathways more accessible.

Another milestone came in November 2024, when voters passed the **millage referendum** with more than 66% of the vote—securing vital funding to recruit and retain excellent teachers. This incredible result is a testament to the community’s commitment to public education and student success in Hillsborough County.

This past year also tested the strength and resilience of Hillsborough County’s schools. When **Hurricanes Helene and Milton** struck last fall, teachers and students faced immense obstacles. In response, HEF and our partners quickly mobilized to raise more than \$1.3 million in relief, supporting 305 teachers whose lives and classrooms had been upended. It was a powerful example of what happens when our community stands together in times of need.

Together, these moments tell a larger story: when the well-being of our schools is at stake, Hillsborough County rises to meet the challenge. Thanks to your support, we are not only helping students and teachers recover—we are building lasting opportunities that will strengthen our community for years to come.



OUR MISSION is to ensure every student in Hillsborough County receives an outstanding public education that equips them for a fulfilling future.

OUR VISION is that Hillsborough County Public Schools is one of the best places to learn and teach — where 100% of students graduate with the ability to pursue anything they can dream.

Unlocking Opportunities for Students

TECH CONNECT

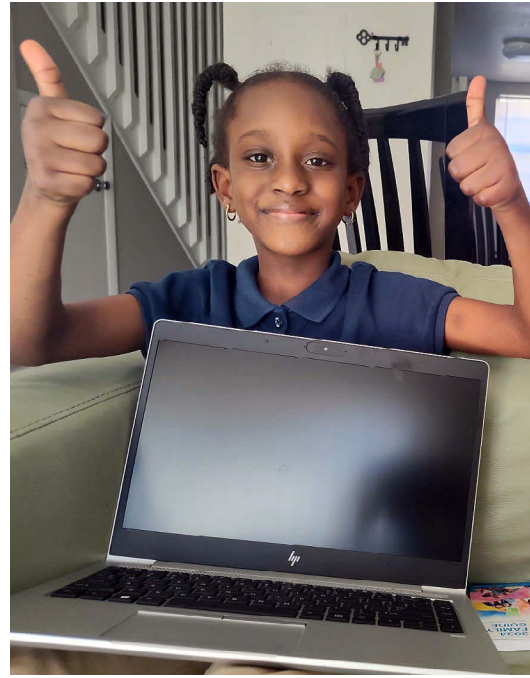
In today's classrooms, technology isn't a luxury—it's a lifeline. Access to a reliable device and internet connection can determine whether a student keeps up with assignments, participates in online learning, or falls behind. Recognizing this, HEF's **Tech Connect** program is helping to close the digital divide by ensuring students have the tools and support they need to succeed.

From July 2024 through June 2025, Tech Connect placed **computers, internet access, and digital literacy support in the hands of 876 students**—removing barriers that too often stand between learners and opportunity. Since its launch in 2020, the program has served more than **5,000 students** and impacted nearly **8,000 children** across Hillsborough County.

With continued funding from the **Children's Board of Hillsborough County**, Tech Connect expanded its reach from **350 to 450 families** this year. Grants from **Allegany Franciscan Ministries** and **Hillsborough County Public Schools** extended vital support to homeless youth and families in the South Shore area, while a partnership with **eSmart Recycling** provided laptops to **156 middle and high school students** through community donations.

"We are very grateful to you for the computer our daughter received. It is very satisfying to see how all the tools you provided her with have greatly helped her academic development."

—Mr. and Mrs. Carabali, whose child received support through HEF's Tech Connect program.



Public Schools extended vital support to homeless youth and families in the South Shore area, while a partnership with **eSmart Recycling** provided laptops to **156 middle and high school students** through community donations.

By providing access, skills, and support, Tech Connect is empowering students to thrive academically while helping to strengthen the partnership between schools and families.

STUDENT CENTER OF POSTSECONDARY EXPLORATION

When **Leniyah**, an 11th grader at King High School, thought about her future, she wasn't sure where to begin. "At first I wasn't too sure on how I would get into the job I wanted until I came here and got the resources I needed," she said. Her experience reflects the mission of the **Student Center of Postsecondary Exploration (SCOPE)**: giving students the tools and guidance they need to move from uncertainty to action.

Working alongside **Hillsborough County Public Schools program advisors and counselors**, SCOPE provides personalized one-on-one coaching and follow-up sessions that help students explore career and college options, complete applications, secure financial aid, and finalize their postsecondary plans with confidence.



This past school year, SCOPE expanded into **Spoto, Lennard, and East Bay High Schools**, extending its reach to even more students across the district. At **Spoto High**, the expansion included the school's first **Post-Secondary Exploration Fair**, which gave the entire student body an inclusive opportunity to connect with representatives from the **military, colleges and universities, trade and technical schools, and local businesses and industries**. For students like **David**, a 12th grader at Spoto, this guidance was eye-opening: "SCOPE has helped me realize that I need to plan out what I am going to do and how to make myself more qualified for universities."

Recognizing that cost remains one of the greatest barriers, SCOPE placed strong emphasis on financial aid. Events such as **FAFSA Parent Engagement Night, FAFSA Day**, and a **virtual financial aid workshop** connected families with hands-on support. Monthly FAFSA raffles and targeted financial literacy sessions helped drive a **combined 39% increase in FAFSA completion across all five SCOPE sites**, opening doors to scholarships and making college and career training more accessible for students.



TRANSFORMING EARLY LITERACY INITIATIVE

The ability to read by third grade is one of the strongest predictors of a student's future success. Early literacy not only unlocks the door to every other subject but also builds the confidence and curiosity children need to thrive. Recognizing how critical these years are, the **Transforming Early Literacy Initiative (TELI)** is rethinking literacy instruction in Hillsborough County.

change. This past year, the initiative reached **1,500 students and 86 early childhood teachers across 14 high-needs schools**.



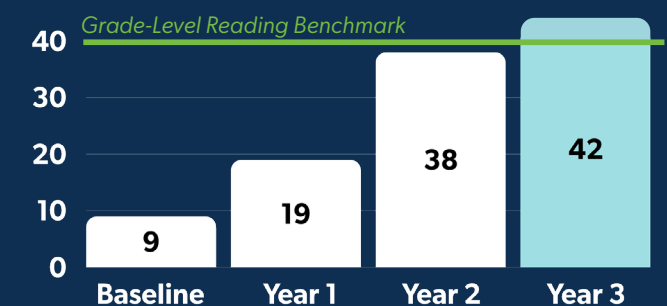
A collaborative partnership between **Hillsborough Education Foundation** and **Hillsborough County Public Schools**, TELI is supported by the **Helios Education Foundation** and other partners, bringing together powerful alliances to drive long-term

Over **12,000 hours of coaching and professional development** was provided, including in-class support, job-embedded training, modeling, and common planning.

The results speak for themselves. At TELI sites, just 9% of students met the kindergarten reading benchmark at the start of the program. Now in year three, that number has **risen to 42%**—a powerful indicator of how targeted, early literacy support can change learning trajectories.

Teachers saw the difference, too: **82% reported greater gains in literacy among their students and stronger engagement in literacy activities**. In addition, **86% of teachers** said they felt better supported as educators, and **80% of administrators** reported growth in instructional knowledge and more effective use of data to drive literacy instruction.

Average Kindergarten Proficiency at TELI Sites



"The highlight of TELI has been regular in-class support and job-embedded professional development, ongoing coaching, modeling, and common planning support."

Angela Livingston, Principal, James Elementary

TAKE STOCK IN CHILDREN OF HILLSBOROUGH COUNTY

For hundreds of Hillsborough County students, success begins with a mentor who believes in them and a clear path to college. Through **Take Stock in Children of Hillsborough County**, HEF provides students with caring volunteer mentors, dedicated College Readiness Coaches, and the promise of a college scholarship—all tools to break the cycle of poverty through education.

This year, **314 students** were served, supported by **242 active mentors** who completed more than **5,300 mentoring sessions**. Students also benefited from **867 visits with College Readiness Coaches**, ensuring they had the guidance needed to prepare for their next steps. Among the **65 seniors in the program**, **64 graduated with a standard diploma—an impressive 98.5% graduation rate**.

The program's impact was celebrated statewide with a **100% Balance Scorecard rating**, the **Luminary Award**, and recognition as a **Gold-level program** in Florida's evaluation system. Most importantly, many students secured their futures with **\$521,944 in scholarships awarded** during the year.

But perhaps the true impact of Take Stock is captured in the words of **graduating senior Bruno Kolombia**: *"I have made everlasting relationships and am forever grateful,"* he said. *"The best part is being a part of a community where I feel I am being celebrated and cheered on constantly."*



TSIC's Bruno Kolombia (pictured above, middle). Students new to the program take the TSIC pledge (pictured left).



COMMUNITY SCHOLARSHIPS

This past school year was a record-setter for HEF's Community Scholarships program, reflecting both growing student demand and the generosity of community partners.

In total, students were awarded **\$1,121,392 IN SCHOLARSHIPS**

"As a first-generation Latina graduate, receiving this relieves financial worry and stress, and eliminates the limits in place for me. Without this scholarship, I most likely would not have been able to attend a four-year university fresh out of high school."

—Sofia Borges, recipient of the Upper Tampa Bay Education Foundation Scholarship

These scholarships do more than help cover tuition and fees—they open doors for first-generation college students, ease the financial burden on families, and give graduates the confidence to pursue their goals beyond high school. Each award represents an investment in a student's future and in the strength of Hillsborough County as a whole.



Kayla Pamphile receives an FSU Scholarship Upgrade.

Investing in Teachers

SCHOOL AND CLASSROOM ENRICHMENT GRANTS

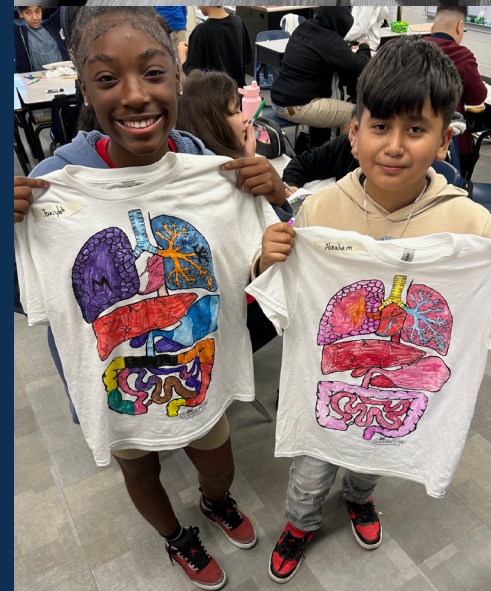
This past school year, HEF awarded **221 School and Classroom Enrichment Grants totaling \$196,438.29**—a **16% increase** from the previous year. These grants empowered educators to turn bold, creative ideas into dynamic learning opportunities for their students. From building STEM prototypes to exploring art and history through immersive projects, these grants supported innovative teaching that might not have been possible through traditional funding.

In total, **more than 30,000 students across 111 schools** were impacted by HEF's classroom grants. Each project represented a unique way to engage learners, spark curiosity, and strengthen academic outcomes—all while promoting collaboration, critical thinking, and hands-on exploration.

GRANT SPOTLIGHT

One memorable example of our grants in action came from Turner Bartels K-8, where 5th grade teacher Kellie Delgado used her grant to bring a Leopard Gecko named Leo into the classroom. The project gave students a firsthand look at animal behavior and ecosystems, while also teaching empathy and responsibility. *"What a fantastic opportunity my students have had in taking care of Leo this school year,"* Delgado shared.

From projects like Leo the Gecko to innovative experiences in STEM, literacy, and the arts, each grant represents an investment in classrooms where students are engaged, inspired, and thriving.



TEACHING TOOLS RESOURCE CENTER

Every child deserves the basic supplies that make learning possible, yet thousands of students in Hillsborough County walk into classrooms each year without them. In a district where nearly **62% of students are considered economically disadvantaged**, HEF's **Teaching Tools Resource Center** helps fill that gap, ensuring teachers have access to the materials they need so students can focus on learning rather than what they lack.



\$3.6 MILLION
in supplies and resources
provided to teachers



254
schools and educational
sites benefited



153,000
students impacted
across the district

Teachers accessed these resources through both in-person and online shopping. There were **7,092 shopping visits** in total, serving **3,344 unique teachers**, a 6% increase over last year. More than one-third of those teachers were first-time shoppers, either new to Hillsborough County Public Schools or new to the program. On average, each in-person shopping trip was valued at **\$469**, while the online store—expanded this year from **48 to 58 eligible schools**—fulfilled nearly **250 orders per month**, averaging **\$278** per order.

The supplies added up quickly, but one number tells the story best: this year alone, teachers carried back more than **423,000 pencils**—a 7% increase from the previous year. From pencils to notebooks, backpacks, and countless other essentials, these resources ensured that students had the basics needed to learn and participate fully in the classroom.

This effort was powered by the generosity of **502 volunteers**, who together contributed nearly **4,000 hours** to stock shelves, fill orders, and keep the Resource Center running for teachers and students across the district.

That impact is felt every day in classrooms like those at **Dover Elementary**, where **4th grade math & science teacher Consuelo Blake** has seen firsthand what the Teaching Tools Resource Center makes possible:

“Without the Resource Center, many of my students would go without. They can’t afford the pens, the pencils, the books.”



TEACHER SUPPORT AND RECOGNITION

The theme of this year's **Excellence in Education Awards** was *“Mission to the Stars.”* But it wasn't just a mission to the stars—it was a mission *for* the stars: the inspiring educators and support staff of Hillsborough County Public Schools. On **January 23, 2025**, Hillsborough Education Foundation partnered with Hillsborough County Public Schools to host the celebration at the **Straz Center for the Performing Arts**, honoring those who guide students toward brighter futures.

From an impressive field of **667 nominees**, three exceptional individuals were recognized for their dedication and impact:

- **Teacher of the Year:** Henry Bryson, History Teacher, Leto High School
- **Instructional Support Employee of the Year:** Bonnie Walters, Secretary 4, Tampa Palms Elementary
- **Ida S. Baker Diversity Educator of the Year:** Antonyia McCray, Student Success Coach, Freedom High School

With more than **1,700 registered guests for the event**, **Morsani Hall inside the Straz Center** buzzed with energy as families, colleagues, and community members cheered for the finalists in a powerful showcase of educational excellence.

In his acceptance speech, Bryson reflected on the broader responsibility educators carry, noting that their work is about exposing students to new ideas and experiences that spark critical thinking and joy. *“Most importantly,”* he said, *“it’s about helping them learn how to love others and, above all, love themselves.”*

For McCray, the heart of the profession goes beyond academics. *“It’s not just about helping students meet academic milestones,”* she told the crowd. *“It’s about creating an environment where they feel valued, heard and seen.”*



Natalia Lopez-Diaz tells the 2025 Excellence in Education audience just how incredible Norma Borges-Garcia—a Bilingual Spanish Aide—is.



One small step for man: Superintendent Van Ayres moonwalks across the stage before addressing the audience.



Left to Right: Bonnie Walters, Henry Bryson, Antonyia McCray.

HURRICANE RELIEF

When Hurricanes Helene and Milton struck Tampa Bay in the fall of 2024, they left communities reeling. While HEF isn't a disaster relief organization—when our students, educators, and schools are at risk, we act, providing emergency support for 305 teachers and essential resources to help schools recover.

\$1.3 MILLION raised in direct relief for HCPS students, teachers, and schools.

For Dr. Clayton Nylund, Technology Education Teacher at Blake High School, the difference between words and action was clear. No stranger to HEF after being recognized as 2024 Hillsborough County Teacher of the Year and named a finalist for Florida Teacher of the Year, he reflected on the support: *"I think just how quickly HEF stepped in and took action to support the teachers that they've supported for years."*



Left to Right: Dr. Clayton Nylund and wife, Natalie; Kristel Brammell

"It made me feel, like, people do care. And not just in lip service. You know, that they're willing to put money towards helping people and taking care of people. So, it just gave me this huge boost."

—Kristel Brammell, Wimauma Elementary teacher

Together, their stories show how action in a time of crisis renewed hope and reminded teachers they are never alone. That support was made possible by the generosity of these donors—and so many others.



Strengthening Public Schools



ADVOCATING FOR PUBLIC EDUCATION

At Hillsborough Education Foundation, advocacy is a key part of how we support students and teachers. We work to ensure public education remains a community priority—and that schools have the resources they need to help every student succeed.



Our advocacy priorities focus on four key areas: increasing funding to meet rising costs and ensure safe, well-resourced schools; raising teacher compensation and investing in strategies to recruit and retain great educators; expanding access to early learning programs; and supporting high-quality mentoring for students who need it most.

"Our community benefits when we all work together for the greater good, and I can think of no higher purpose than to improve the lives and well-being of our children."

—Anna Corman, HEF President & CEO

RACE FOR EDUCATION: APRIL 12, 2025



The results are in—the 4th Annual Race for Education was a smash success. Held at Blake High School, the event drew more than 1,200 registrations, making it the biggest race yet.

CEOs IN SCHOOLS: 1 DAY OF CHANGE

On **November 1, 2024**, the **6th Annual CEOs in Schools: 1 Day of Change** brought more than **100 business and community leaders** into Hillsborough County classrooms for a firsthand look at the successes and challenges facing public education. Founded by **Brian Butler, CEO of Vistra Communications**, and coordinated by **Hillsborough Education Foundation** in partnership with **Hillsborough County Public Schools** and **Vistra Communications**, the initiative continues to strengthen the vital connection between schools and the business community.



This year's turnout was especially meaningful. Coming just weeks after Tampa endured back-to-back hurricanes, Helene and Milton, the strong participation demonstrated a resilient show of support for students and educators. Leaders stepped away from their offices to shadow principals, engage with students, and gain a deeper understanding of the realities inside our schools.



Shannon Keil and Teri Madill at Riverview Elementary for CEOs in Schools 2024.

At Riverview Elementary, **Shannon Keil, CEO of The Regent**, joined **Principal Teri Madill** and shared her perspective on the program.

“Don’t go into it thinking that you’re just there to look and see what’s happening,” she advised. “Go in to look and see what you can do.”

Ed Ellsasser, CEO of PrimeGroup Insurance, has been paired with **Principal Kevin Kastner** at West Tampa Elementary for several years and said the experience has given him a close look at both the needs and opportunities within schools. “They need our support—the business community’s support—because there’s only so many dollars in the budget each year,” he explained, adding that hands-on help is needed:

“We can help connect the dots in the community, help raise money, roll up our sleeves, bring our teams out to volunteer, and give the schools the support that they need.”



Left: Brian Butler at Riverview Elementary.

Top Right: Ben Burgess at Anderson Elementary.

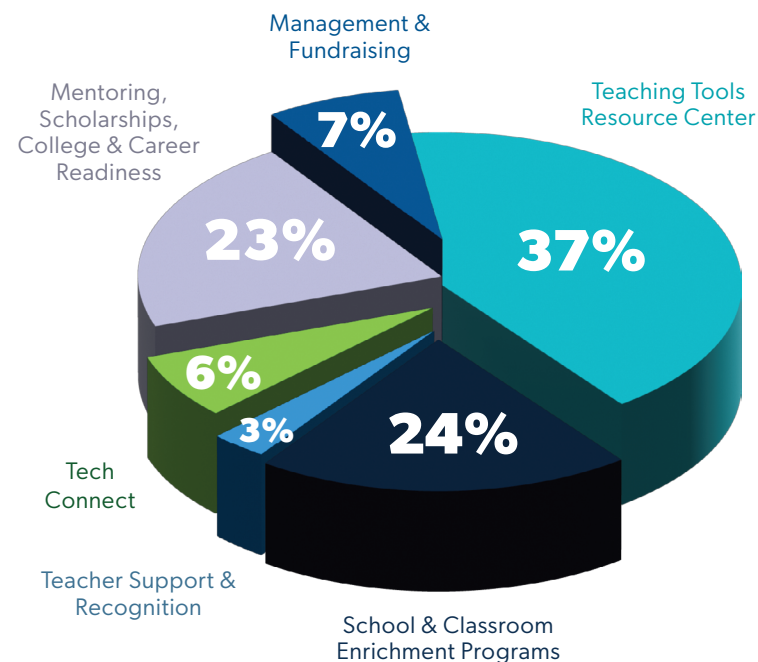
Bottom Right: Ashley Magill at Lanier Elementary.



Take Stock in Children graduate, Angelica Ramos, is surprised with a Suncoast Housing Scholarship.

Our Financial Overview

93 CENTS of every dollar you invest is used directly for our initiatives. Our dedication to being responsible stewards of donors’ contributions has earned us these accolades.



	Fiscal Year Ending June 30, 2025	2024
PUBLIC SUPPORT & REVENUE		
Contributions	\$4,435,498	\$2,788,434
Fundraising Events (Net)	\$223,612	\$213,607
Donated Goods & Services	\$3,689,716	\$3,543,409
Government Grants & Other Grants	\$2,620,608	\$1,783,577
Investment Income	\$823,025	\$446,378
Contract Revenue	\$204,858	\$886,103
Other Revenue	\$2,490	\$141,791
TOTAL PUBLIC SUPPORT & REVENUE	\$11,999,807	\$9,803,299
PROGRAM SERVICES & EXPENSES		
Program Services	\$10,267,910	\$9,111,308
Management & General	\$419,517	\$265,453
Development/Fundraising	\$388,053	\$304,852
TOTAL PROGRAM SERVICES & EXPENSES	\$11,075,480	\$9,681,613

Our Generous Partners

\$250,000+

Amy and Roger Swinford
Children's Board of Hillsborough County
Community Foundation Tampa Bay
Consortium of Florida Education Foundations
The Estate of Helen Gilbert
Helios Education Foundation
Suncoast Credit Union / Suncoast Credit Union Foundation
Think Big for Kids
The Vinik Family Foundation

\$100,000+

Jacarlene Foundation
Mary and Bob Sierra Family Foundation, Inc.
Men of Vision, Inc.
The Mosaic Company
Spurlino Foundation
Take Stock in Children
Volunteer Florida, Inc.
William A. Gregory, Jr. Foundation, Inc.

\$75,000+

Generate Capital, Inc.
Rays Baseball Foundation, Inc.

\$50,000+

Gopher Resource
Hillsborough County Sheriff's Office
Skanska USA Building, Inc.
Tampa Electric Company
United Way Suncoast

\$25,000+

Amscot Financial
Aon
Hillsborough County Board of County Commissioners
Coca-Cola Beverages Florida
Creative Contractors, Inc.
HCA Florida Brandon Hospital
Humana, Inc.
Ivy Enrichment Foundation of Tampa Bay, Inc.
The LeRoy Neiman and Janet Byrne Neiman Foundation
Mark Fernandez
McKinstry
Pinellas Education Foundation
Publix Super Markets Charities
RaceTrac
RSM US Foundation

\$10,000+

Aetna, Inc.
Ajax Building Company, LLC

The Allen Family
Amgen
AT&T Florida
The Beck Group
Bloomin' Brands, Inc.
Borrell Electric Company, Inc.
Centegix
Christopher and Cindy Taylor
Coastal Mechanical Services, LLC
Crowe Foundation
Cynthia and Fred Weiss
David Amis
DFCU Financial
Edward T. Bedford Foundation
Fr. John H. Kaack Scholarship Fund
FleischmanGarciaMaslowski Architecture
Florida Blue
Friends of U.S. Military Families, Inc.
Gentlemen's Quest of Tampa, Inc.
George Edgecomb Bar Association
HCA Healthcare
JE Dunn Construction
Junior Achievement of Tampa Bay
Long & Associates Architects/Engineers, Inc.
Mabel and Ellsworth Simmons Charitable Foundation, Inc.
Manhattan Construction, Inc.
New York Life Insurance
Painters on Demand, LLC
PBK Architects
Physicians at Brandon Regional Hospital, Inc
PROCEDEO
The Ritz Ybor on behalf of Tribeca Salons
Tampa Bay Seminole Club
Tampa Kiwanis Foundation, Inc.
Tierra, Inc.
United HealthCare Svs. Inc
Valley National Bank

\$5,000+

AAA Restoration and Builders
Advanced Drying Systems
B & I Contractors, Inc.
Baker Barrios Architects, Inc.
Betty Castor
The Billy Turney Foundation, Inc.
CBRE, Inc.
CDW
Citi
Connection Public Sector
Corebridge Financial
Davis Islands Garden Club, Inc.
DC Studio Architecture and Planning
Envision Lighting System
Fred and Mary Sue Rothenberg
Gettel Foundation
Harvard Jolly, Inc.
Hill Ward Henderson
Hillsborough Classroom Teachers Association, Inc.

Hillsborough College
Holmes Architects
Horus Construction Services, Inc.
John Riesenburger
Jose Loret de Mola
Kelly Educational Staffing
Ken Sale
L.V. Thompson Family Foundation
Muma Children's Hospital at TGH
New York Yankees Tampa Foundation
Newline
Pacific Life Foundation
Phoenix Engineering Group
Phoenix Houses of Florida
PRACTICE
Ringling College of Art and Design
Arthur Scott Myers
Sports Club of Tampa Bay, Inc.
Tampa Bay Times
Tannia G. Peeples
Target
T-Mobile
The University of Tampa
Upper Tampa Bay Education Foundation, Inc.
Vistra Communications
VoltAir Consulting Engineers, LLC
WGI
Wharton Smith, Inc.
Wilder Architecture, Inc.

\$2,500+

A.D. Morgan Corporation
Anna and Kyle Corman
Automated Building Control Systems, Inc.
BAL Engineering, Inc.
The Bank of Tampa
Barr & Barr
Captrust Financial Advisors
Catalina Marketing Charitable Foundation
Center for Technology and Education
Coast Dental Services, Inc.
Corey and April Neil
Countryside Glass & Mirror
CPPI
Derrick Brooks Charities, Inc.
The Lightning Foundation
Ellison Construction
Ford & Associates, Inc.
Foresight Construction Group
Gale Associates, Inc.
Gilbane Building Company
Grow Financial Federal Credit Union
Hepner Architects, Inc.
Hillsborough Association of School Administrators, Inc.
Jeanne Jones
JP Wiseman Construction Services, LLC
La Shawnda Williams
Lindell Investments
Mary Odum
McKinstry Charitable Foundation

Merit Professional Coatings, Inc.
Michael and Sylvia Pheneger
Phi Beta Kappa Alumni Association of Tampa Bay
Pure Project Management
RIPA & Associates
Rivero, Gordimer & Company
Rowe Architects, Inc.
Sherloq Solutions, Inc.
Shumaker Loop & Kendrick
Sidney Park Brown
Sudler Foundation
Traci Koster Campaign
United Data Technologies, Inc.
USF College of Education
Waste Pro of Florida, Inc.

\$1,000+

Allstate Construction, Inc.
Arlethea and Inniss Goden
Ashberry Water Conditioning
Bay Area Manufacturers Association
Bernard and Laura Gaffney
Brown and Brown Insurance
Carl Brannan
The CarMax Foundation
Ciminelli Real Estate Services of Florida, LLC
Coleman Middle School PTSA
David Schur
Donald Altman
Dr. Mimi Graham
Dunham Trust Company
Elizabeth Reynolds
Ernie Morris Enterprises, Inc
Florida West Coast Credit Union
Helen Wesley
Hillsborough County Sheriff's Office Charities, Inc.
hrEdge Consulting
Jackie Gilbert
Janeen Andrews
Jeep Depot
Joel and Janet Stephens
Kelly Junior
Kevin and Cindy Sutton
Key Engineering Associates
Khorl Whittaker
Laura and Benjamin West

Laura and Clarke Hobby
LEVERAGE
Lockheed Martin Corporation
Lori Rice
Mark and Anne Kaiser
Mary Atkins
Michael Leeds
Neal Communities
Nicole Cook
Paul Palmer
Perry Homes Foundation
Plant High School PTSA
Rasmussen University
Reno Boyd Building Co.
Roland Park Foundation, Inc.
SGM Engineering
Shagbark Properties
Shannon Stein
Simon and Dina Canasi
Sisters of Perpetual Indulgence Tampa Bay
Stephen and Diana Sessums
Steve and Regina Grinstead
Sue M. House
Suzanne DeCopain
Tara Geise
Tate Kubler
Theresa Pietruszka
Thomas Ray
Tylar Braunschweig
Walmart #2387
Walmart #2627
Walmart #5220
Walmart #5255
Walmart #5760
Walmart #925
Woodrow Wilson Foundation, Inc.
World Champions Ministries, Inc.
Zuleyka Castro

\$500+

Adewale and Denise Vazquez Troutman
Albert Lee on behalf of Pi Iota Chapter
Omega Psi Phi Line Brothers
Andrea Suffredini
Angie Anthony
Artome, LLC
Ben Burgess
BK Jackson
BSA Lifestructures, Inc.

Campo Engineering
Chris Prentiss
Christy Lyle
Daniel Currea
Debra S. Lubrano
Edward Jones
Elizabeth L. Hapner
Ellen Posel
Emilene Barnes
ERDI Partners, Inc./Mrs. Colleen Faucett
Eric and Gina Bailey
Form 10 Group, Inc.
Greg Grabau
Hiren Patel
James Roberts
John Mueller
Jonathan OSteen
Julie Lawrence
Keith Fakhoury
Kendra Scott Hyde Park
Kevin Lewis
Kim Thresher
Krewe of Agustina de Aragon
Maggie Briggs
Mandy Gray
Matt Mitchell
Maylin Pino
Meteor Education
Michelle Baird
MooreCo, Inc.
Paypal
Perma-Bound
Pfizer, Inc.
The Progressive Insurance Foundation
Richard Mallow
Rothenberg, Mohr & Binder, LLP
Samuel Brannan
Shonna Buffington
Southern Oaks Insurance
Spencer Anderson
Stantec
Tampa General Hospital
Taniyka Ragland
Ted and Roberta Stasney
Tim Journy
Tina Hodge
Tina James
Walmart #5622
Walmart #6253



Board of Directors

Officers

Sean Shaw, Chair
Swope, Rodante P.A.

Tate Kubler, Vice Chair
Ernst & Young, LLP

Mark Fernandez, Treasurer
Stonehill Innovation

Maureen Butler, Ph.D., Secretary
Vistra Communications

Anna Corman, President & CEO
Hillsborough Education Foundation

Directors

Van Ayres
Hillsborough County
Public Schools

Joyce Haines, Ph.D.
Retired Educator

Chon Nguyen
Newgentek

Betty Castor
Former Florida
Commissioner of Education
& Former USF President

Kim Huff
Hillsborough Association
of School Administrators

Ankit Patel
USF Undergraduate
& TSIC Alumni

Tommy Chuck
iHeartMedia Tampa Bay

Tina James
Florida Blue

Ted Stasney
Marketing Research
Services

Nadia Combs
Hillsborough County
School Board

**Jenifer Jasinski
Schneider, Ph.D.**
University of South
Florida

Joel K. Stephens
Thomas Financial Group

Rep. Fentrice D. Driskell
Florida House District 67

Rob Kriete
Hillsborough Classroom
Teachers Association

Kevin H. Sutton
Hill Ward Henderson

James Few
CBRE

Nina Lacevic
Amscot Financial

Chris Taylor
CT Equity Group, LLC

Sol J. Fleischman, Jr.
Fleischman Garcia
Architecture

Dr. Anne Lenz
Pediatric Endocrine
Associates

Kimberly D. Thresher
B.C.S. Construction Law
Clark Hill

Jackie Gilbert
Suncoast Credit Union

**William "Bert"
McBride**
Trenam Law

Mandy Weitknecht
Skanska

Emeritus

Tom R. Dorety

Doretha Edgecomb

Sue House

DJ Johnson

Governor Bob Martinez

Mary Sue Rothenberg

2024-2025 Impact Report

*Interested
in staying
involved
throughout
the year?*



**Scan to sign up for
our newsletter!**

EducationFoundation.com
(813) 574-0260
2306 N. Howard Avenue
Tampa, Florida

*Like, share and follow us
on our socials:*



/EducationFoundation



@HillsEduFnd



Hillsborough Education Foundation

